



Elevate

Installation Guide



1.00 - Introduction

This installation guide has been created to assist in constructing Elevate from a kit format.

TO ENSURE THE PROPER FUNCTIONING OF ELEVATE, IT IS IMPERATIVE THAT THE INSTRUCTIONS IN THIS GUIDE ARE FOLLOWED, IN THE ORDER SHOWN.

Care of Products

When storing, handling or erecting your Elevate kit, please be aware of the following:

- When unwrapping, take care not to damage products with a knife.
- Always check components before installing.
- PVCu components should not be left out in freezing conditions.
- Do not leave wrapped coloured foiled components in direct heat or sunlight.
- Use care when applying force fitting caps/trims.

Sealing

If sealant is used on your Elevate kit, it is essential that the correct sealant is used. The diagrams below show the required sealant dependent upon the glazing material used.



- Self cleaning glass
- Standard sealed units

For a perfect colour match, use the Liniar Approved range. See www.liniar.co.uk/supplies for details.

Further Assistance

Your Elevate kit should include all the information you need – but if you do need to get in touch with any queries, please use the contact details found on the back cover.

1.01 - Tools and Consumables Required



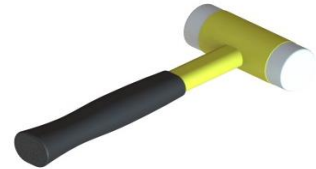
Cordless Drill

With Pozi bits and suitable drills for pilot holes in Aluminium



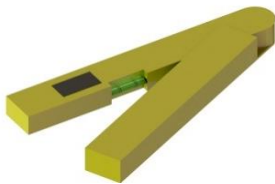
Utility Knife

General use



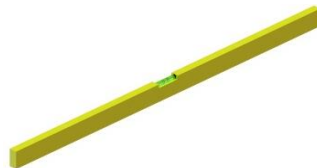
Glazing Hammer

Fitting trims and caps



Angle Finder

General measuring and checking of angles/pitches



Spirit Level

General level checking



Tape Measure

General measuring and checking



5mm Allen Key

Fitting hip bars to the ridge end boss



Sealant

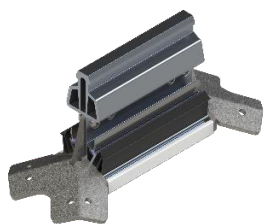
With silicone gun



10mm Socket Wrench

Secure all roof bars

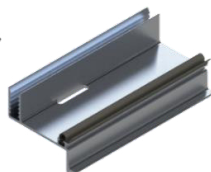
2.0 – Kit Components



Ridge Assembly



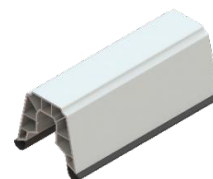
Wall Rail Assembly



Glazing Retainer



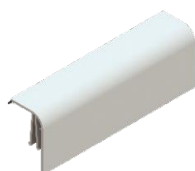
Hip Bar Assembly



Hip EnergyPlus Top
Cap
LZPE0042



Ridge
EnergyPlus Top
Cap
LZPE0044



Glazing Trim
LZPE0028



External End
Cover
LZMP0077



Internal End
Cover
LZMP0078



Roof Bar
End Cap
LZMP0052



Weather
Dam
LZSU0097



90°
Horizontal
Joining Plate
LZSU0001



Ridge Foam
Bung
LZSU0098



Hip Bar
Foam Bung
LZSU0099



Wall Rail
Cloaking
Foam
LZSU0087

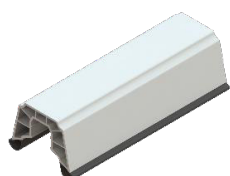


M6 x 25
Socket
Cap Head
Screw
LZFX0025



M6
Flange
Nuts
LZFX0018

Transom Bar Components:



Transom EnergyPlus
Top Cap
LZPE0041

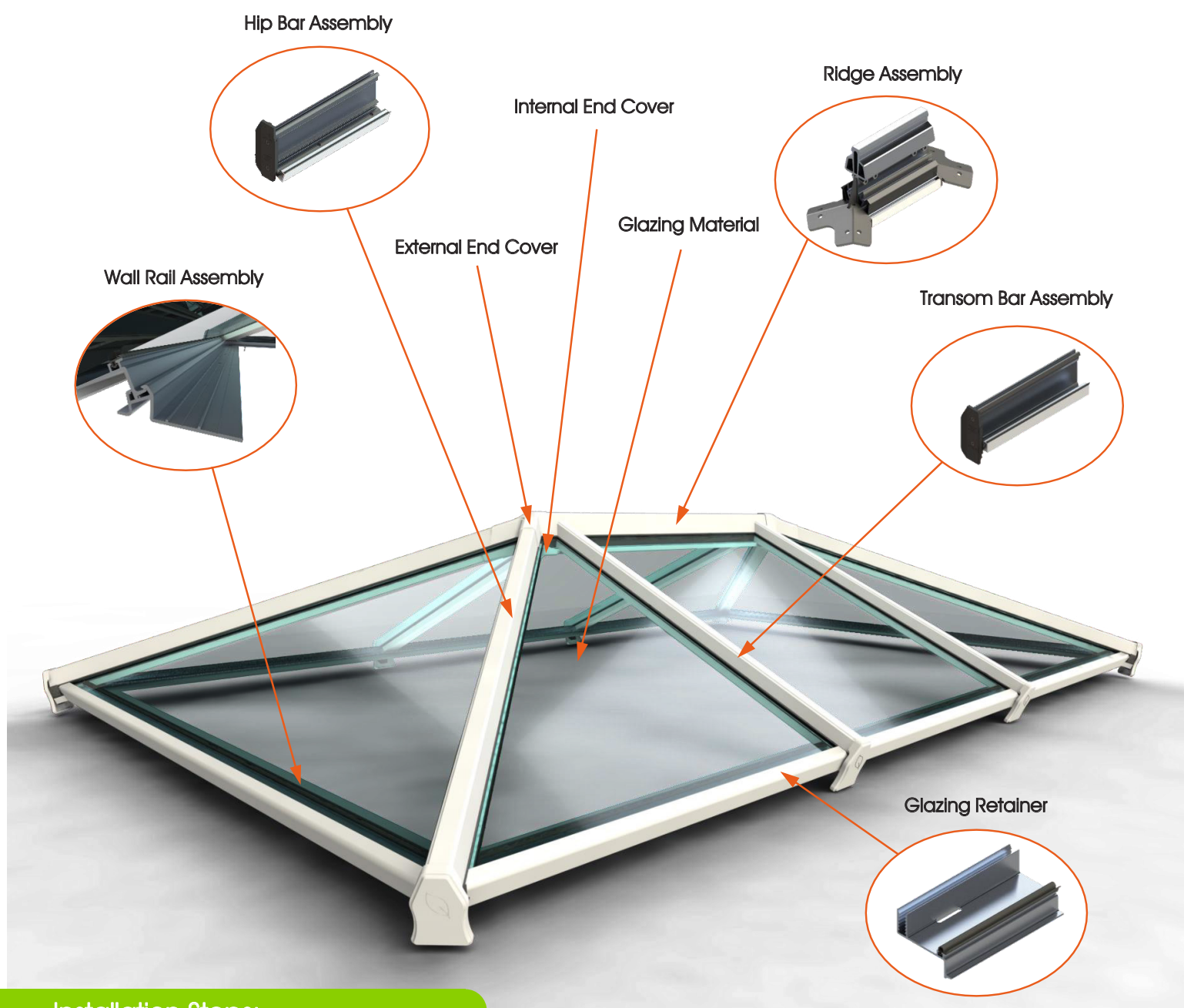


Transom Bar Assembly

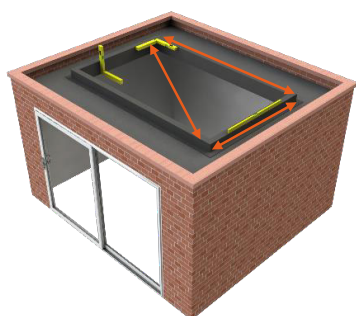


In-Line Horizontal
Joining Plate
LZSU0030

2.01 – Overview



Installation Steps:



Preparation
Section 3.00,
pages 8-9



Wall Rail Assembly
Section 3.01,
pages 10-11



**Glazing Retainer and
Cloaking Foam Assembly**
Section 3.02,
pages 12-13



Hip Bar Assembly
Section 3.03,
pages 14-15



Ridge Assembly
Section 3.04,
pages 16-17



Transom Bar Assembly*
Section 3.05,
pages 18-19



Internal End Cover Assembly
Section 3.06, pages 20-21



Ridge Foam Assembly
Section 3.07, pages 22-23



Glazing Assembly
Section 3.08, pages 24-25



Hip Bar Foam Assembly
Section 3.09, pages 26-27



Top Cap Assembly
Section 3.10, pages 28-29



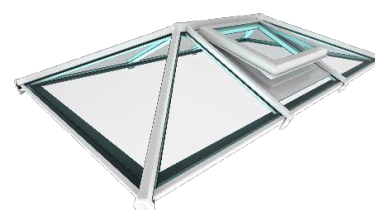
Weather Dam Assembly
Section 3.11, pages 30-31



External End Cover Assembly
Section 3.12, pages 32-33



Roof Bar End Cap Assembly
Section 3.13, pages 34-35

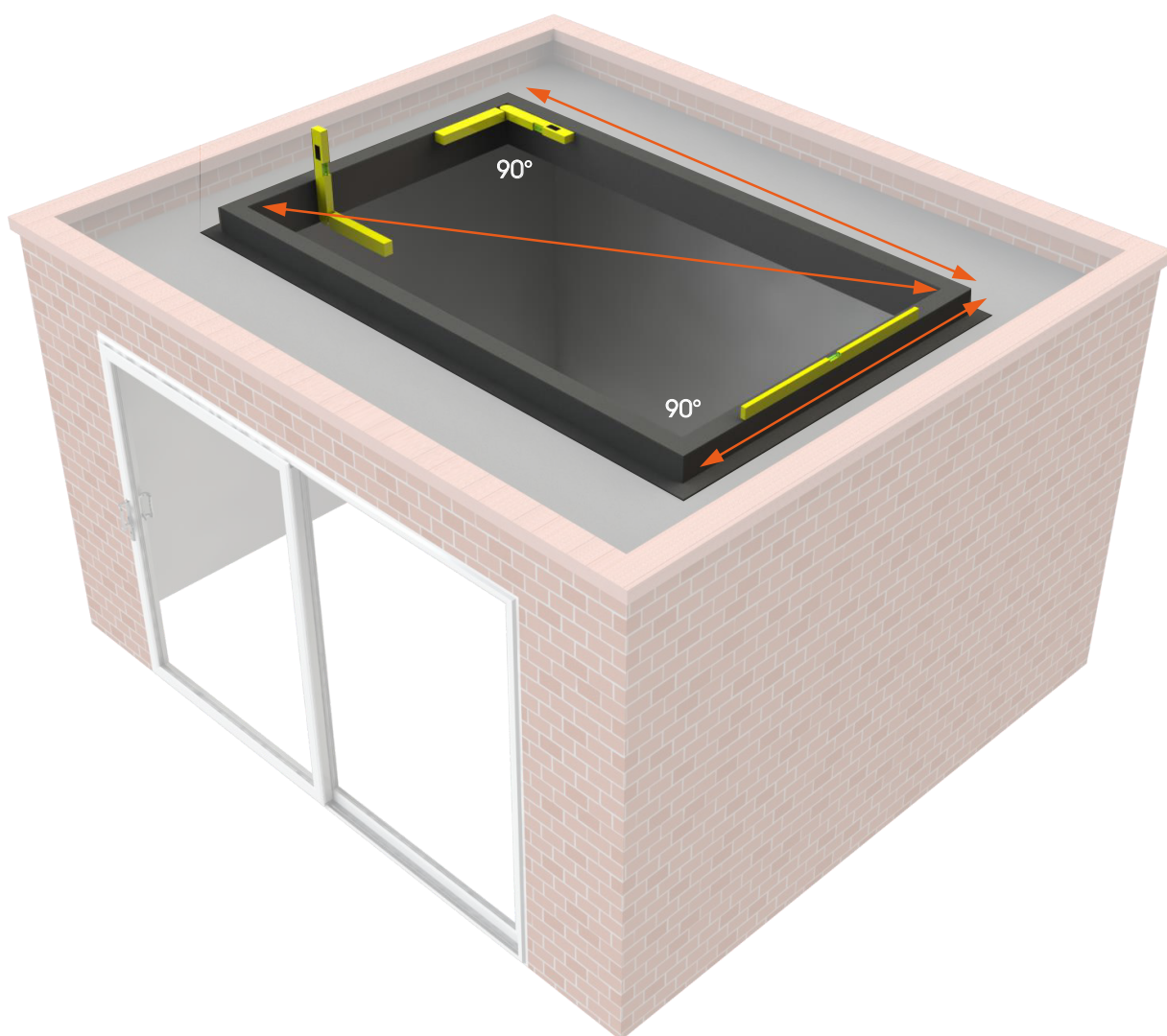


Muntin Bar and Roof Vent Assembly
Section 4.00, pages 36

**Skip this section if your kit excludes transom bars*

3.00 – Preparation

Before Elevate is installed, ensure the framework is fully assessed and all roof components are available. All relevant sizes are shown on the paperwork provided.



Check Bill of Materials

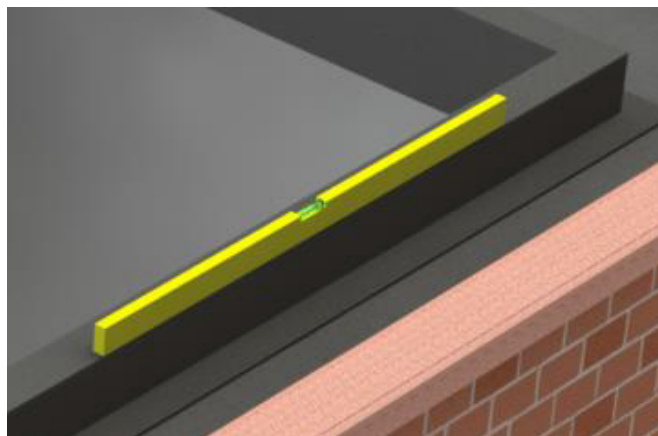
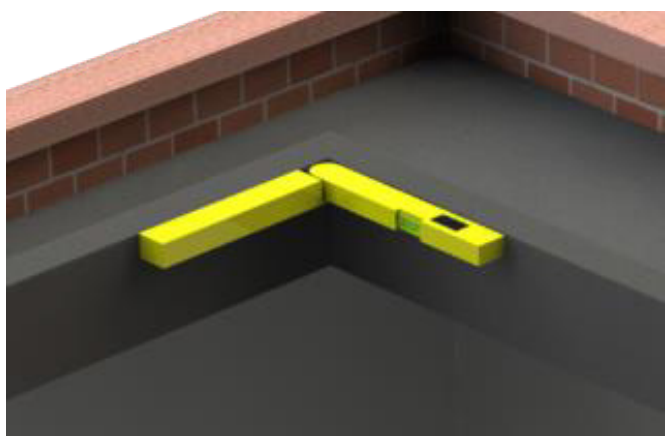
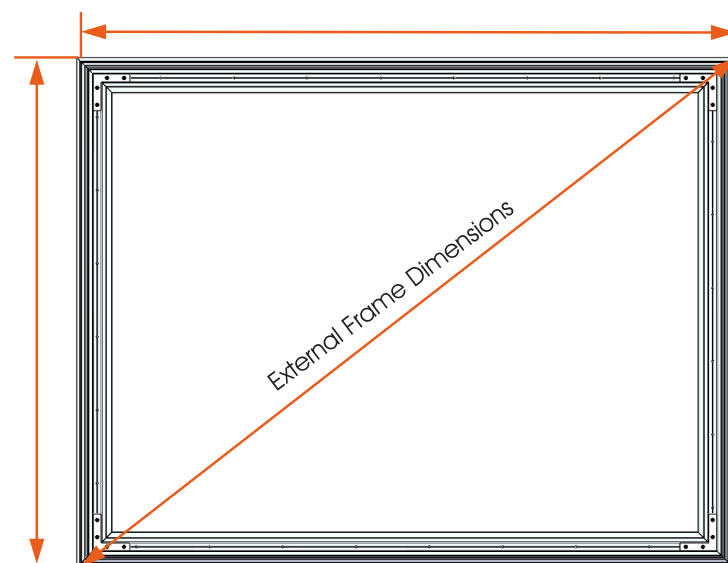
Use the paperwork that came with your Elevate kit to make sure you have received all the components that are listed before you start.

Measure Length, Width and Diagonals of Frame

Measure the roof area you will be working on and check that the frame has been installed square and is the correct size. The external frame dimensions will be provided within the paperwork.

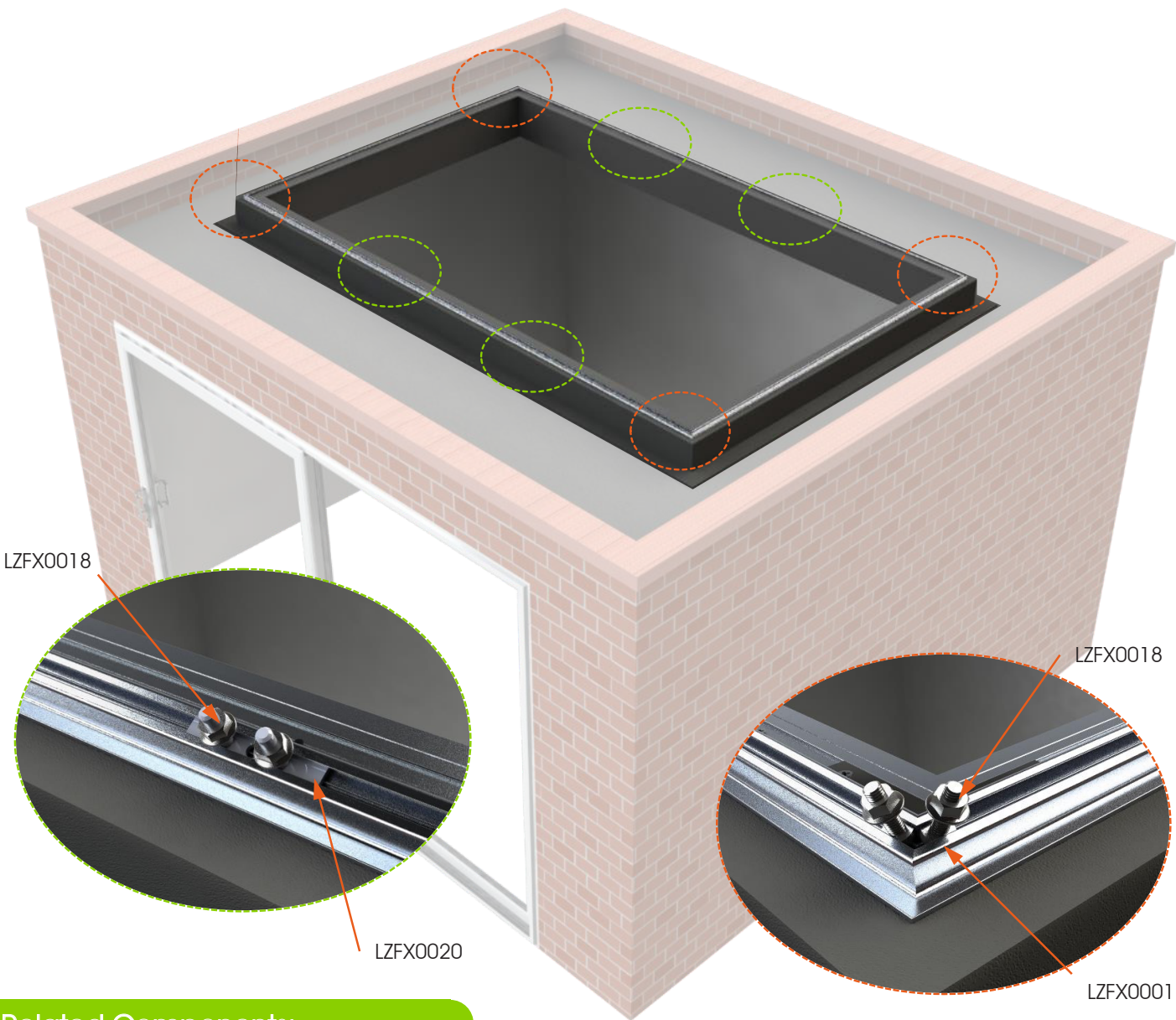
Check Level

Use a spirit level and level up if necessary before the Wall Rails are fitted.

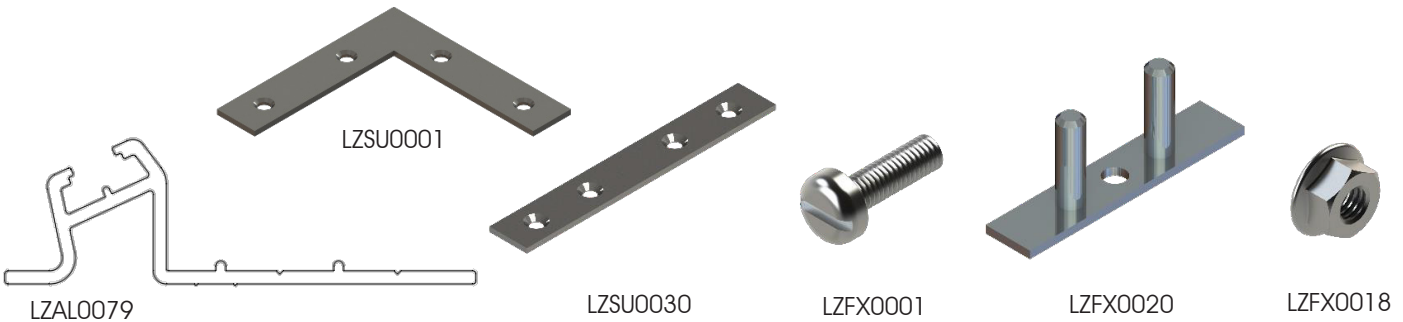


3.01 – Wall Rail Assembly

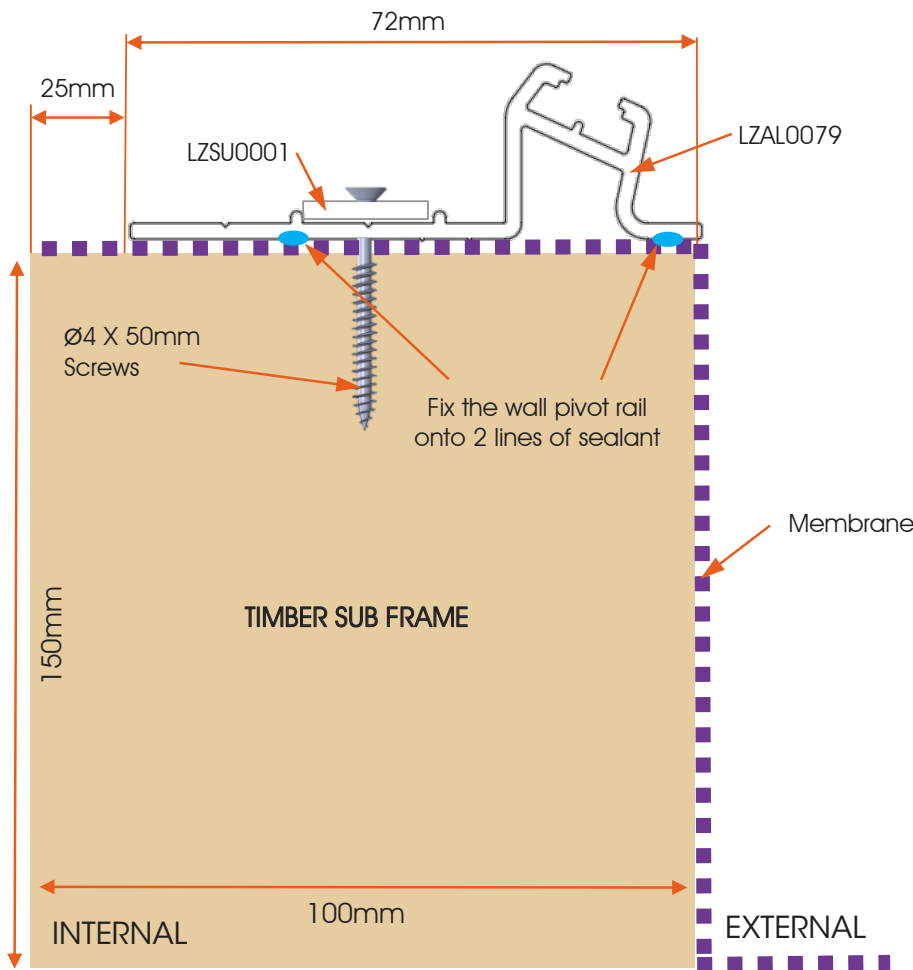
Ensure all fixings are located in the Wall Rail prior to fixing to the sub-frame. Once the Wall Rail is fixed they cannot be inserted.



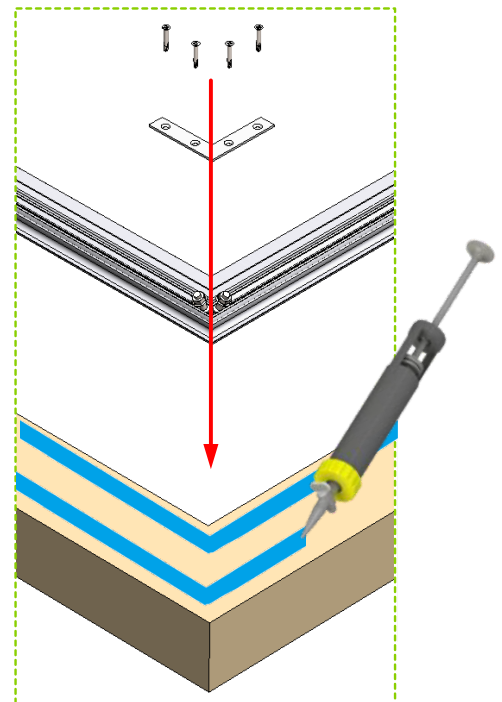
Related Components:



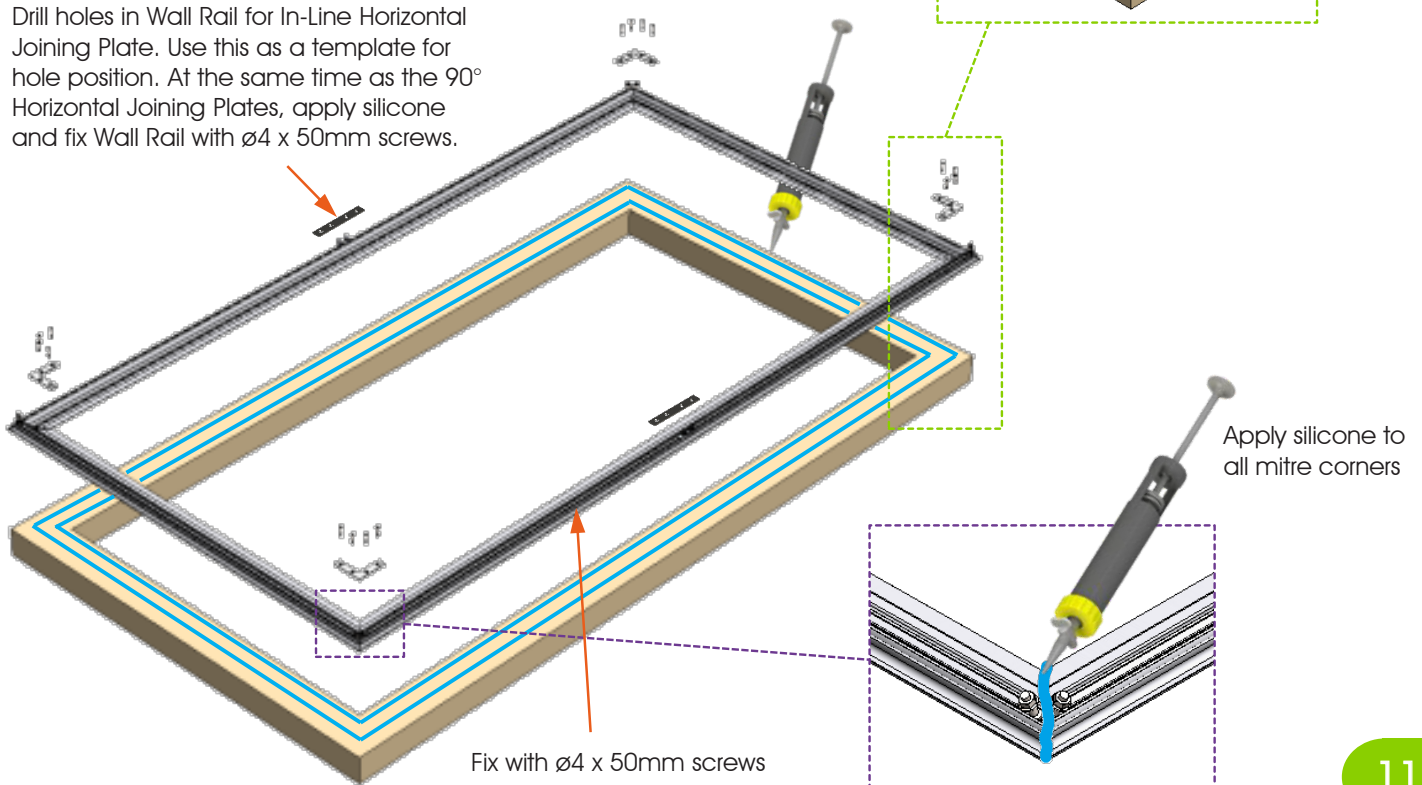
The timber sub-frame must be dressed with the roof membrane before Elevate is installed. Run two lines sealant around the perimeter, and apply a line of sealant to all mitre cuts. Bed the wall rail into the sealant. The Wall Rail should be secured with $\varnothing 4 \times 50\text{mm}$ fixings at a minimum of 500mm centres (150mm from corners), with a 90° Horizontal Joining Plate fitted to every corner, and an In-Line Horizontal Joining Plate fitted next to every transom bar.



Drill holes in Wall Rail for 90° Horizontal Joining Plate. Use this as a template for hole position. Apply silicone to sub frame and fix Wall Rail with $\varnothing 4 \times 50\text{mm}$ screws.

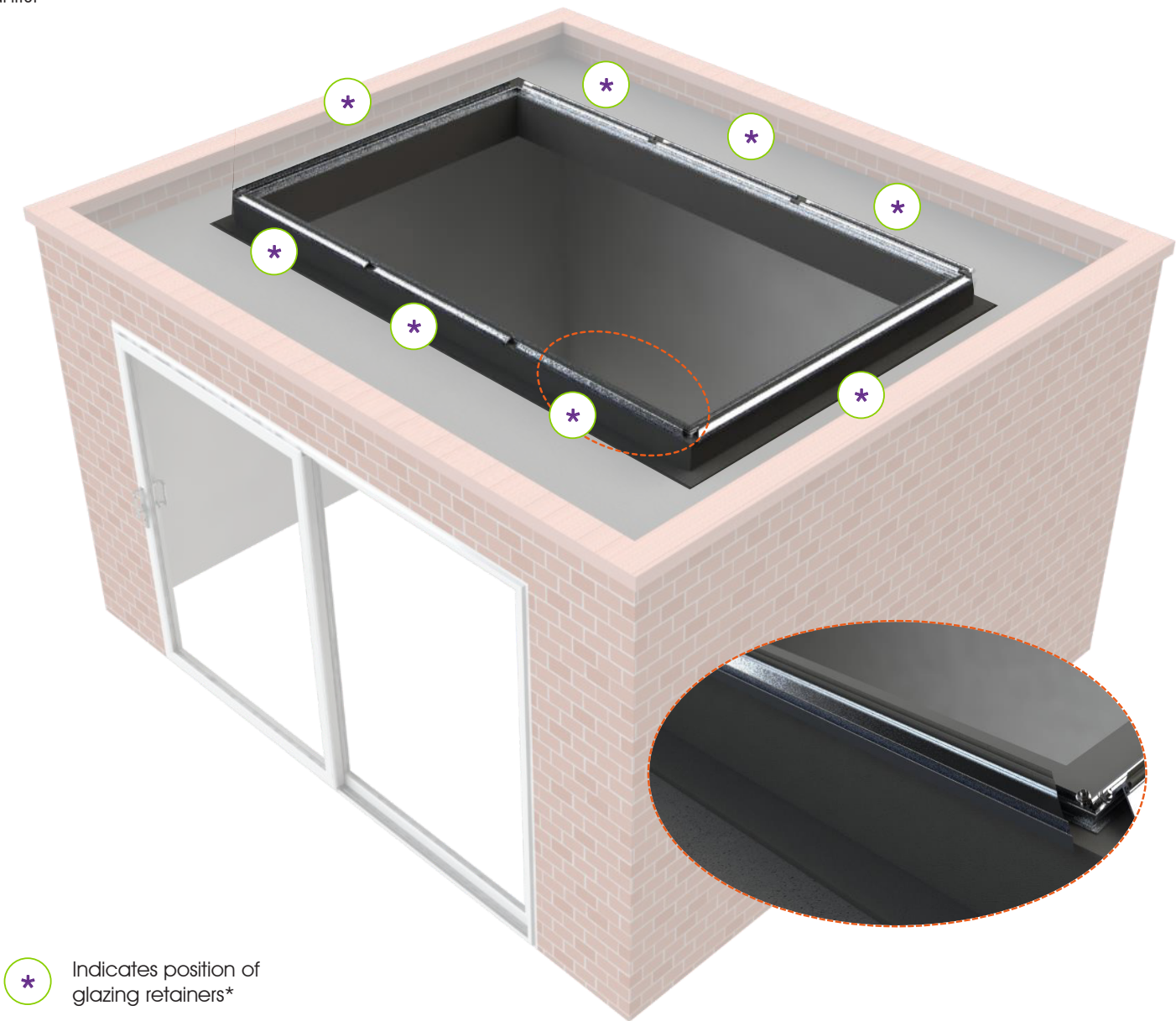



Drill holes in Wall Rail for In-Line Horizontal Joining Plate. Use this as a template for hole position. At the same time as the 90° Horizontal Joining Plates, apply silicone and fix Wall Rail with $\varnothing 4 \times 50\text{mm}$ screws.



3.02 – Glazing Retainer and Cloaking Foam Assembly

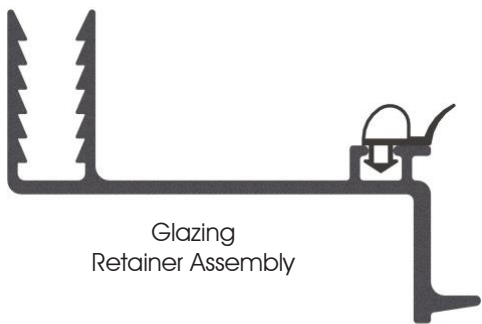
Ensure the Glazing Retainer Assembly are installed prior to fitting the roof bars. Glazing Retainers sit at the bottom of all glazed units.



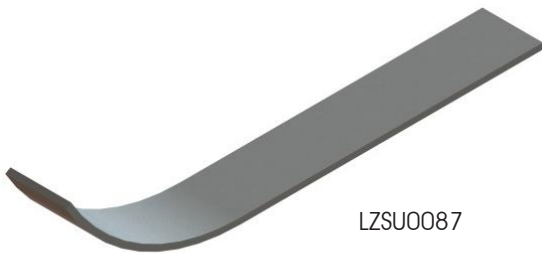
 Indicates position of glazing retainers*

** See paperwork for glazing retainer positions*

Related Components:

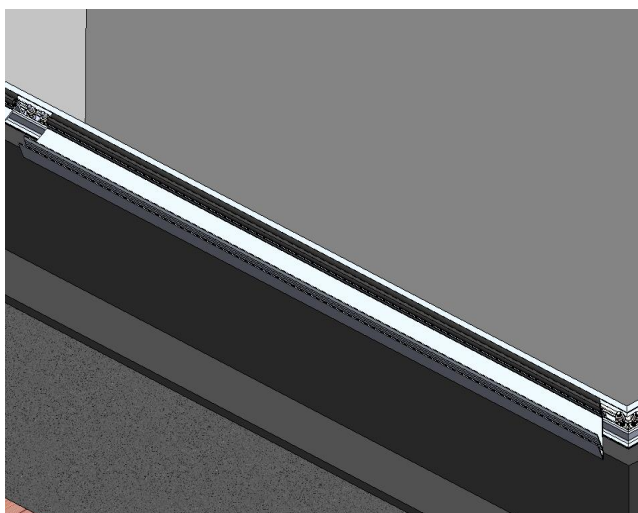
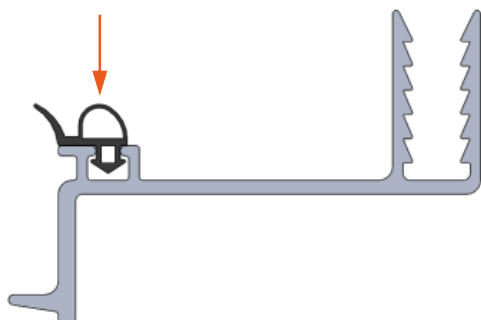


Glazing Retainer Assembly



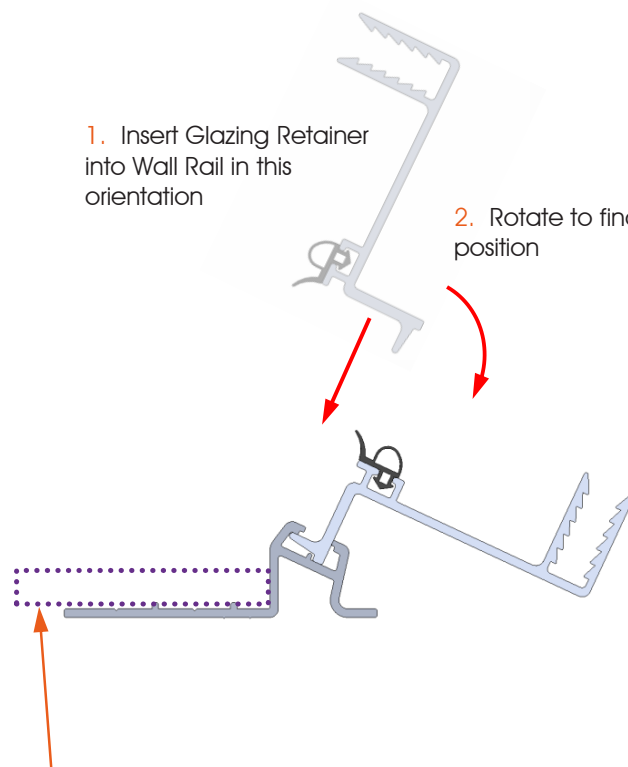
LZSU0087

Ensure Glazing Retainer Bubble Gasket (LZSU0065) is fitted in the correct orientation on all Glazing Retainers (LZAL0046A)



1. Insert Glazing Retainer into Wall Rail in this orientation

2. Rotate to final position



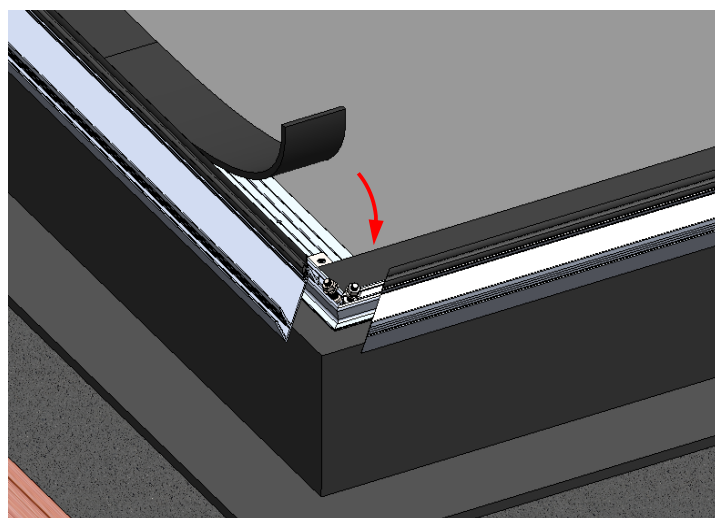
The Wall Rail Cloaking Foam (LZSU0087) will overhang the Wall Rail by 15mm

Wall Rail Cloaking Foam (LZSU0087)

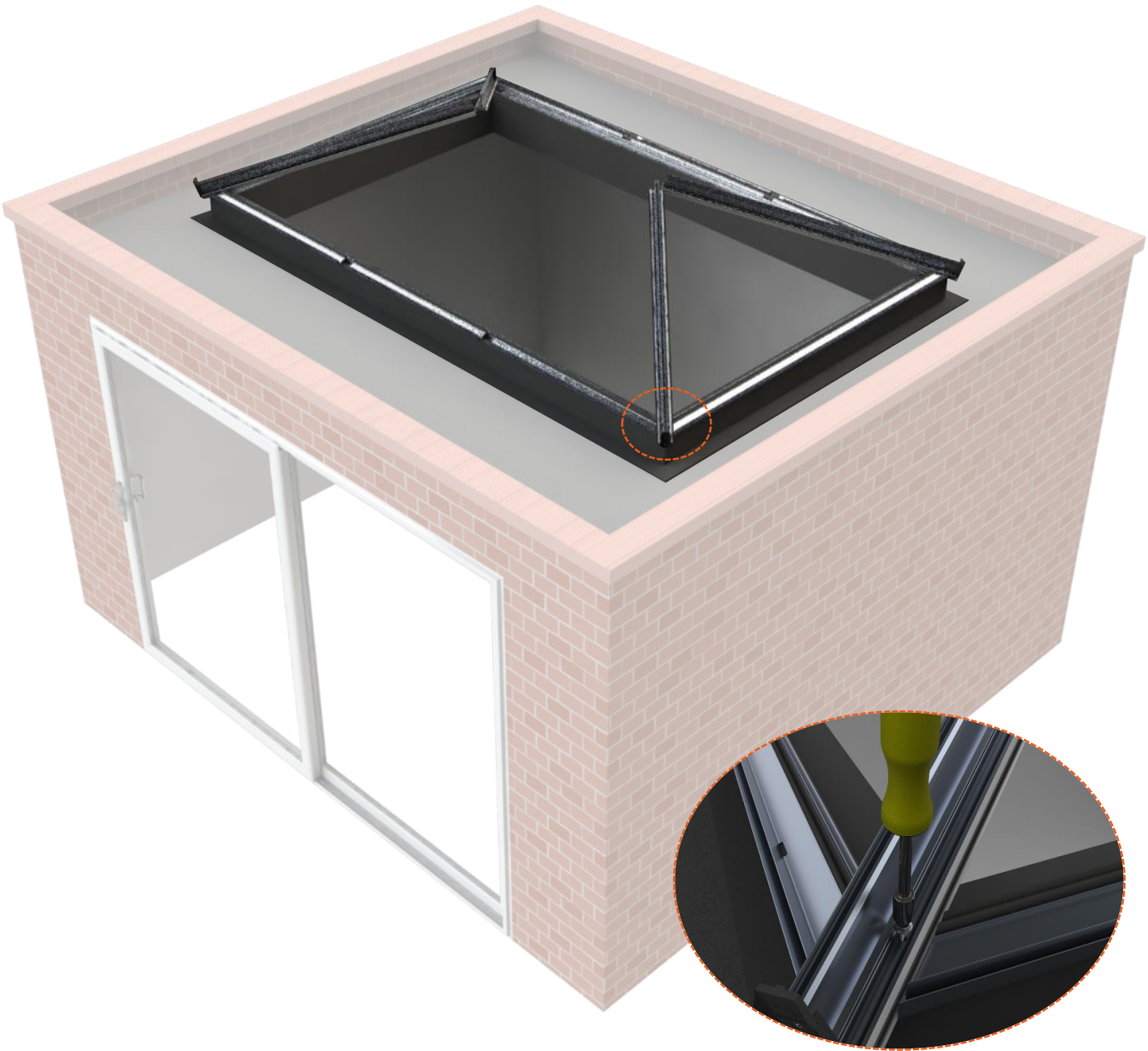
The Wall Rail Cloaking Foam adds extra insulation, minimises condensation on glass and improves the overall aesthetics.

The foam will be supplied in rolls and requires cutting to length to fit the Wall Rails.

Look for adhesive backed foam 6mm x 60mm. Remove backing tape and apply to the full length of the Wall Rail.



3.03 – Hip Bar Assembly



Related Components:



Hip Bar Assembly



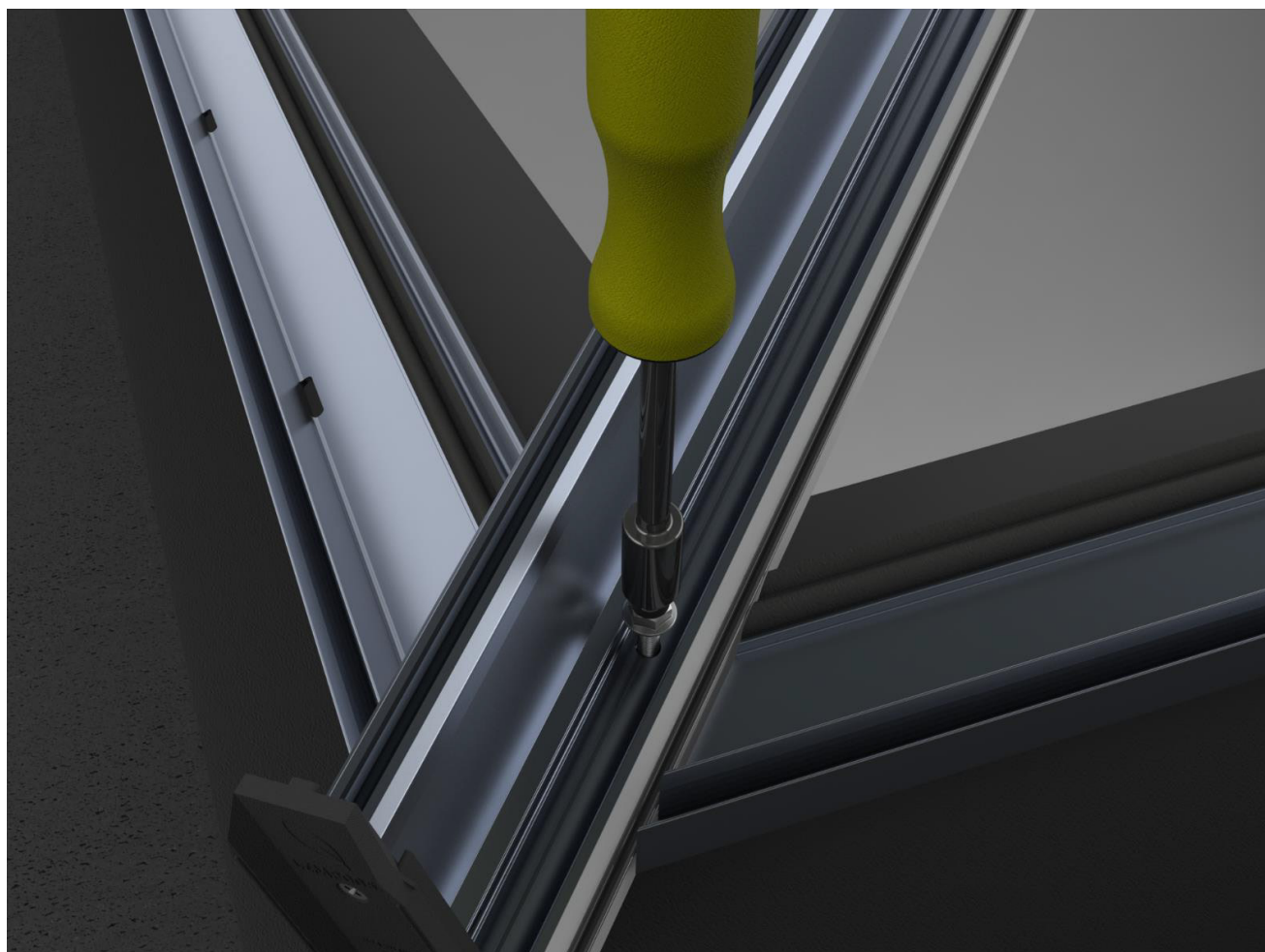
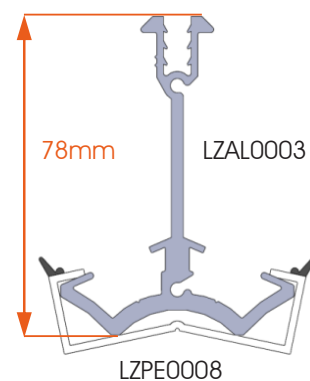
LZFX0001



LZFX0018

Loosely connect the bottom end of the Hip Bar Assembly to the Wall Rail, securing it in place with 2 x M6 Flange Nuts. They will be tightened later on.

** Hand tighten - do not use an impact driver*



3.04 – Ridge Assembly



Related Components:

Ridge Assembly



LZFX0025

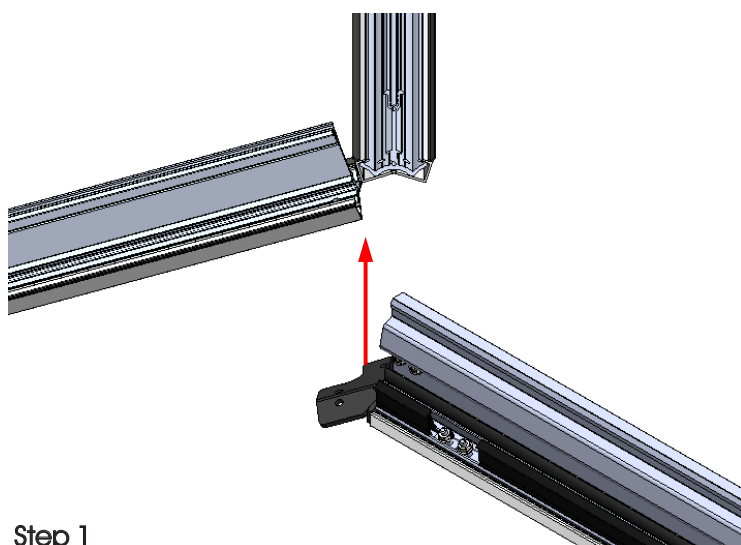
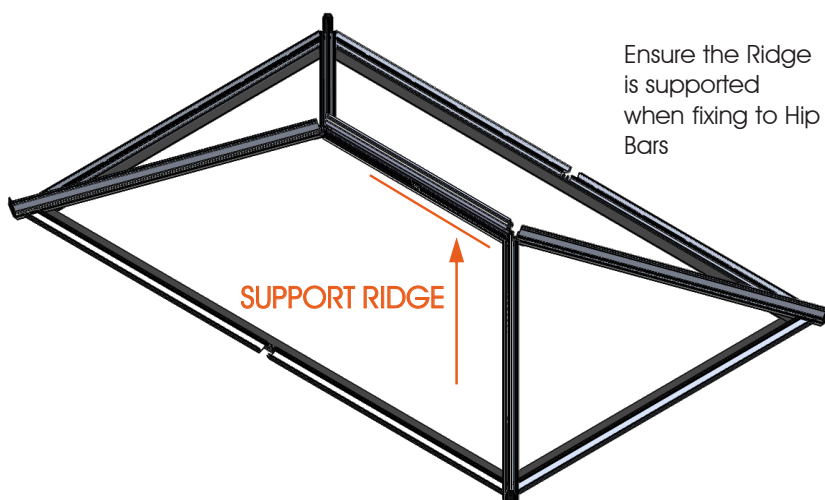


LZFX0018

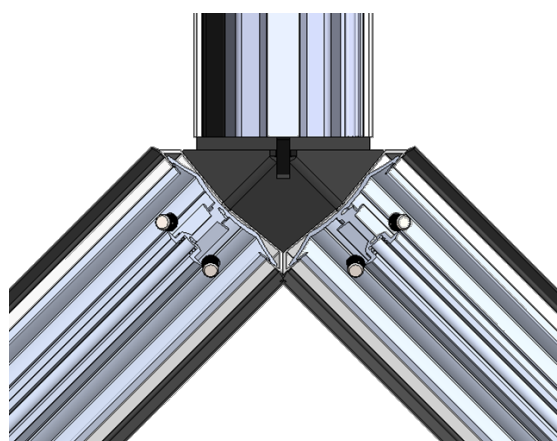
** Check correct number of fixings in the Ridge prior to fixing in position, there should be a fixing for each Transom Bar*



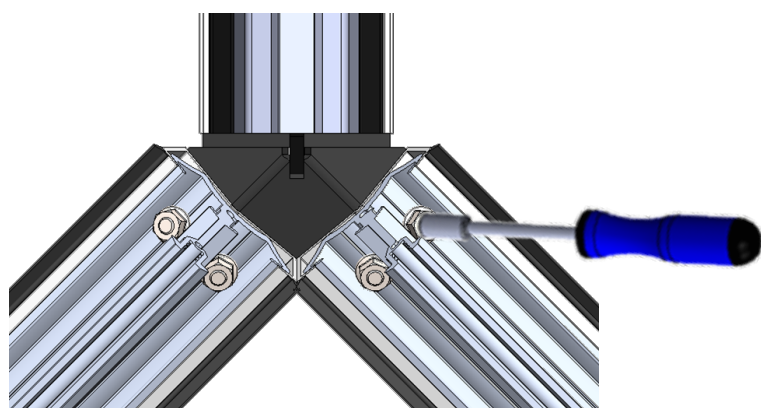
Ensure the Ridge is supported when fixing to Hip Bars



Step 1
Lift Ridge towards Hip Bars



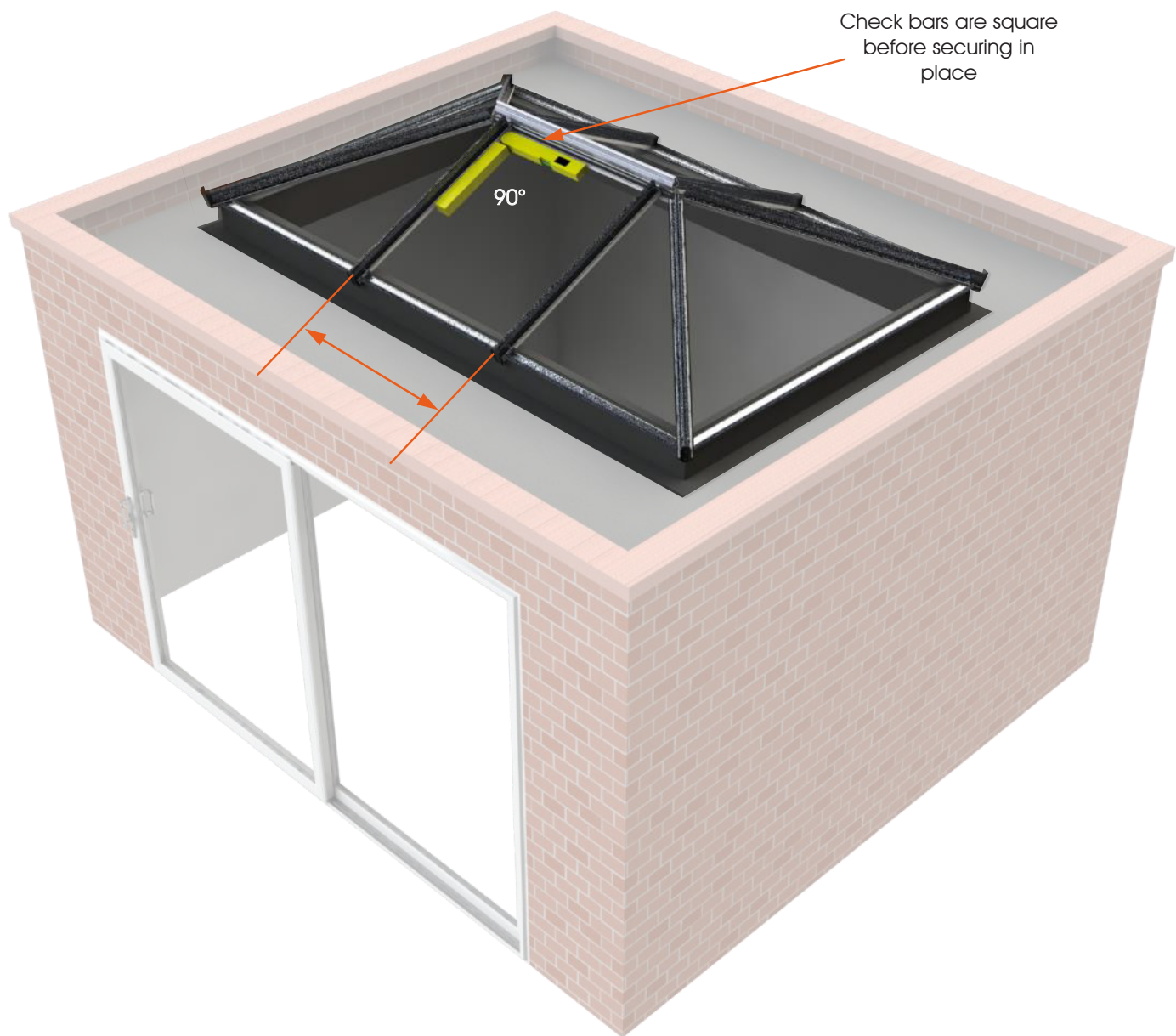
Step 2
Insert eight M6 x 25 Socket Cap Head Screws (four on each side of Ridge) pointing upwards



Step 3
Loosely fit M6 Flange Nuts, align Hip Bars and tighten all nuts on each Hip Bar (top and bottom)

3.05 – Transom Bar Assembly

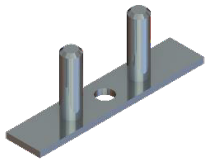
The Transom Bars can now be fitted to support the Ridge. Check dimensions from the paperwork for the positioning of the bars.



Related Components:



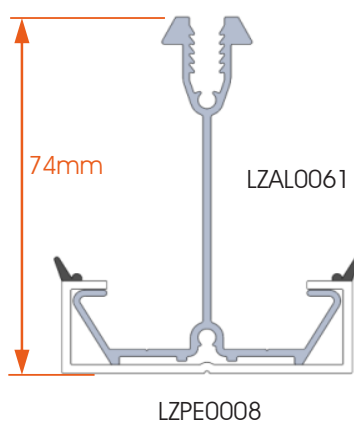
Transom Bar Assembly



LZFX0020

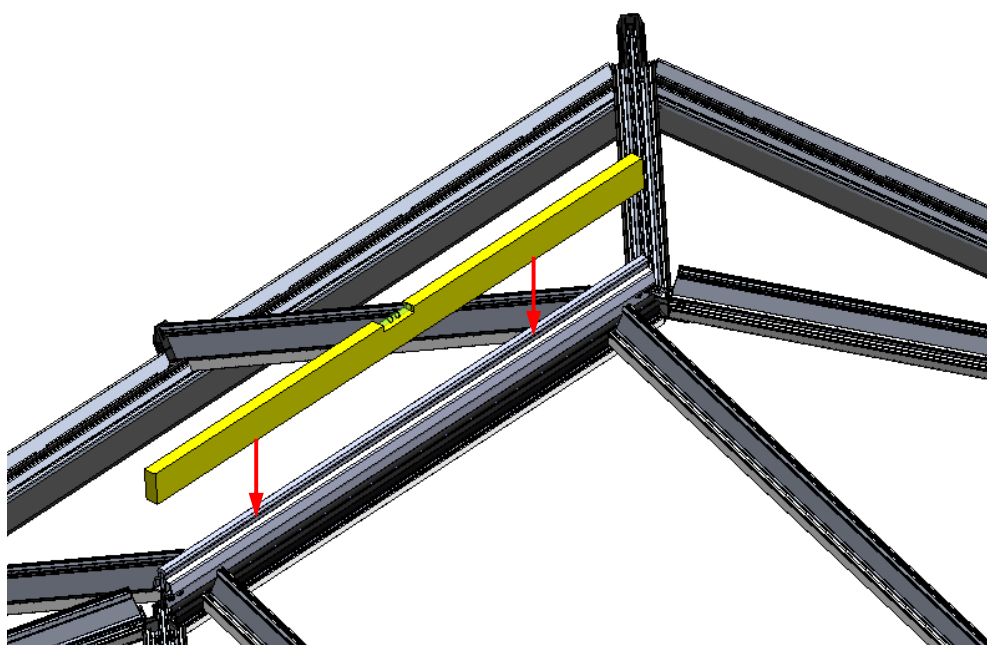
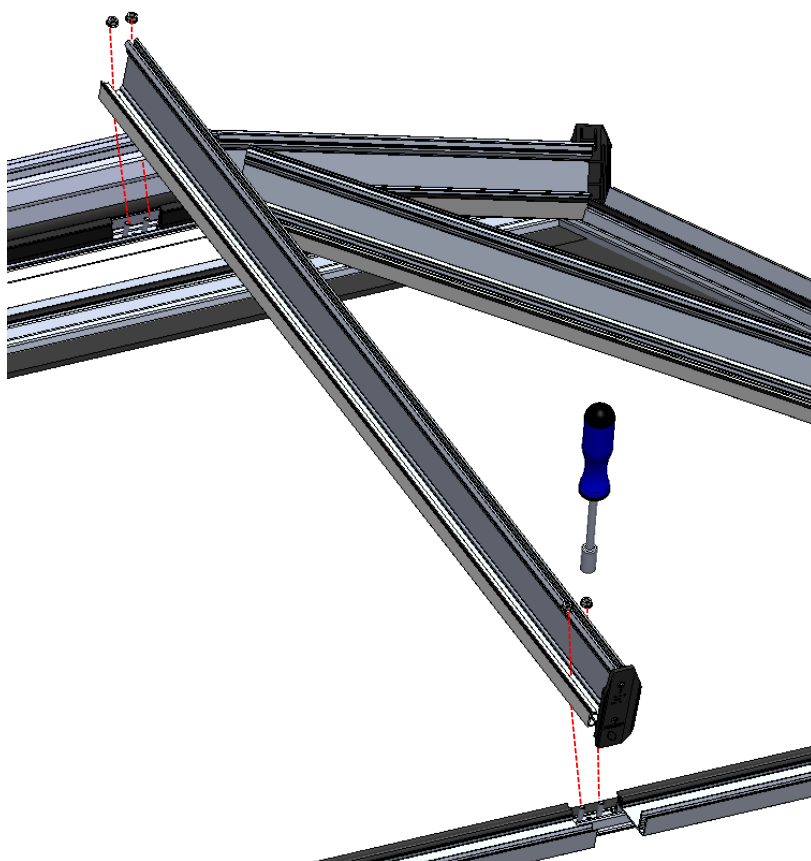


LZFX0018



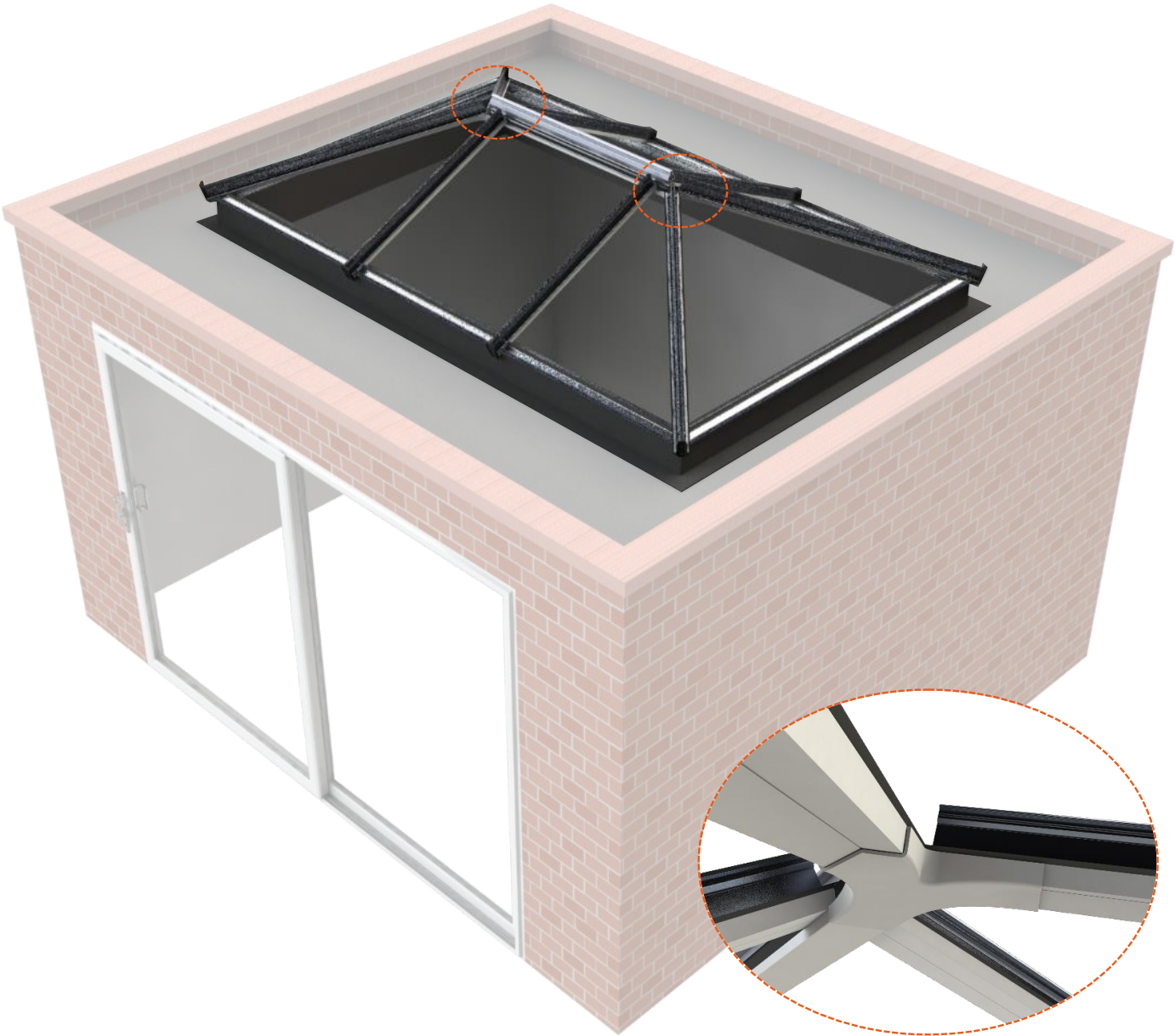
The Transom Bar Assembly can now be fitted. Each bar is secured by four M6 Flange Nuts. This is on the Wall Rail and Ridge.

Loosely tighten so that the roof can be levelled (shown below).



Check the Ridge is level once Transom Bars are fitted using a spirit level. Tighten all Transom Bar nuts around Elevate once level.

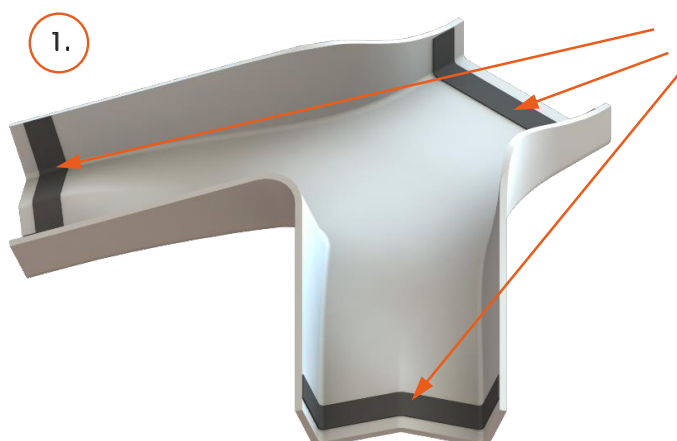
3.06 – Internal End Cover Assembly



Related Components:

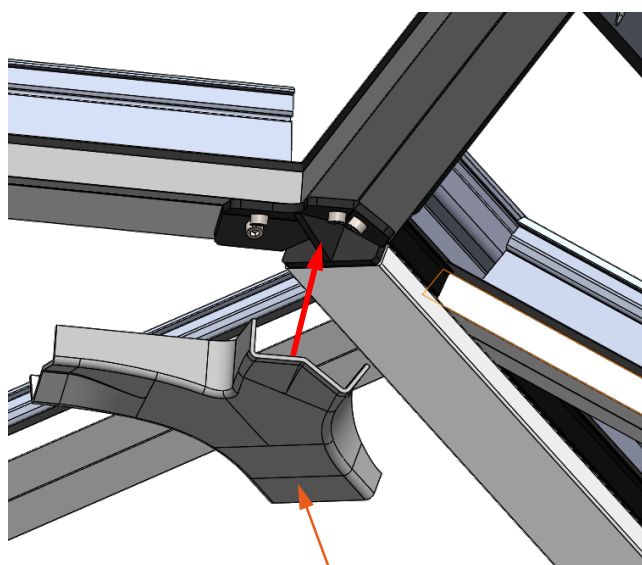


LZMP0078



Peel off tape backing
before applying to roof*

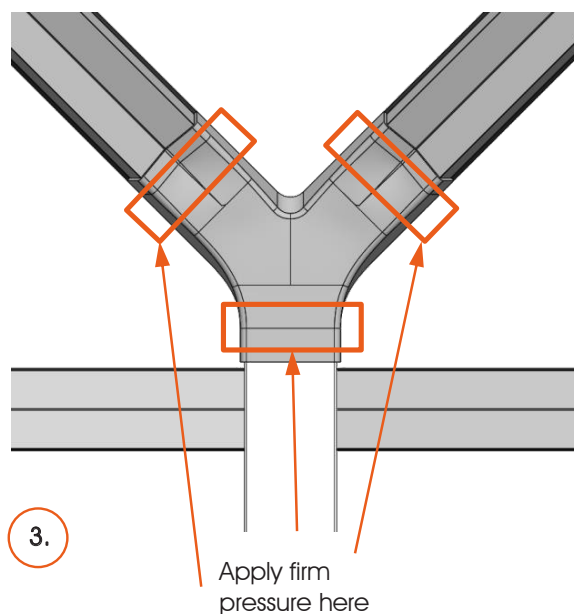
** Ensure Internal End Covers are clean
and dry before applying to roof*



2.

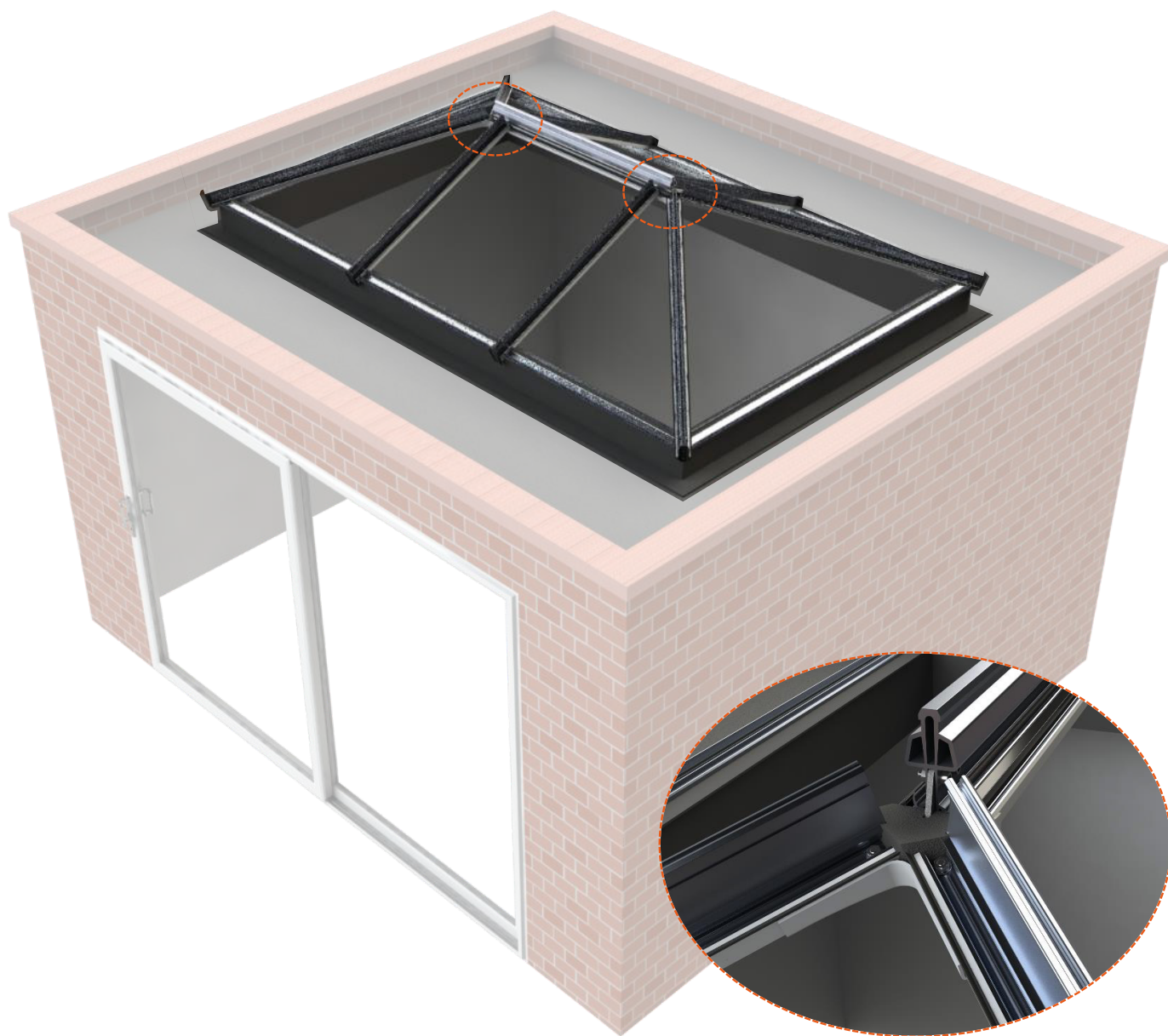
Place the flat side
pointing towards
the Ridge

Firmly apply pressure in the areas shown below,
ensuring that all sides are properly stuck



Repeat this process on the other side of Ridge. There are two Internal End Covers per roof.

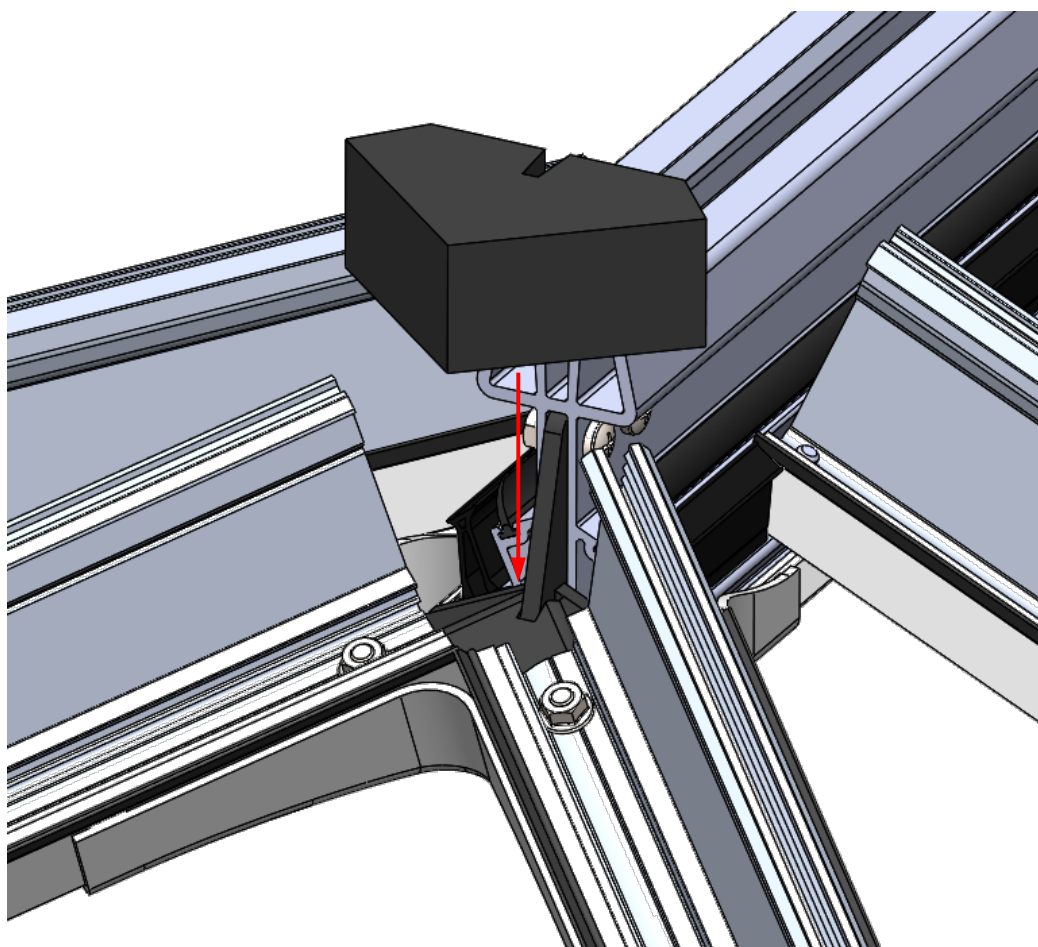
3.07- Ridge Foam Assembly



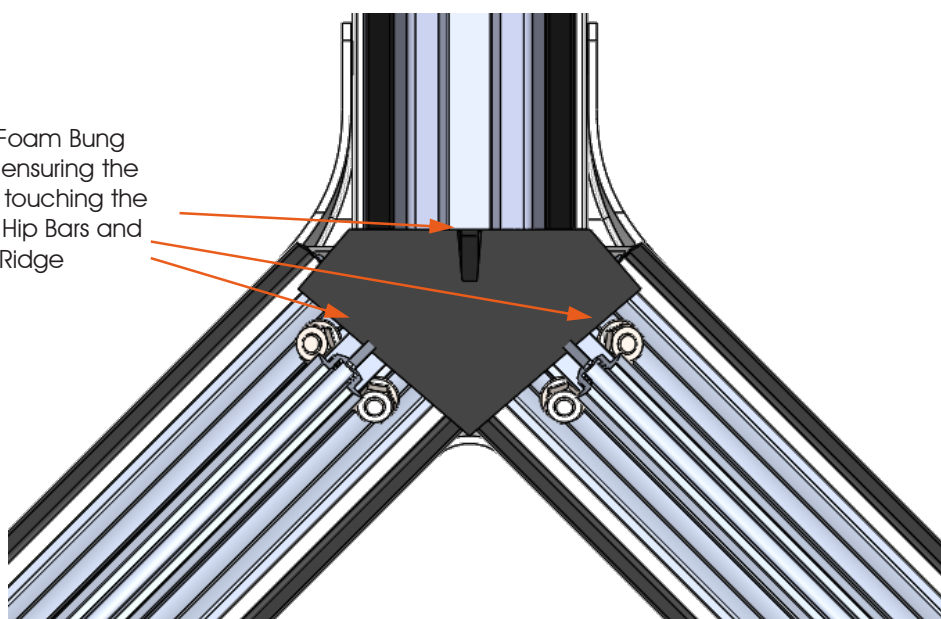
Related Components:



LZSU0098



Push Foam Bung
down, ensuring the
foam is touching the
end of Hip Bars and
Ridge



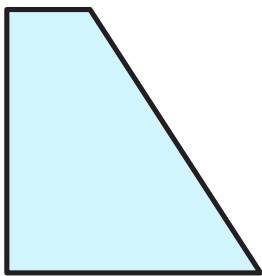
Repeat this process on the other end of Ridge. There are two Foam Bungs per roof.

3.08 – Glazing Assembly

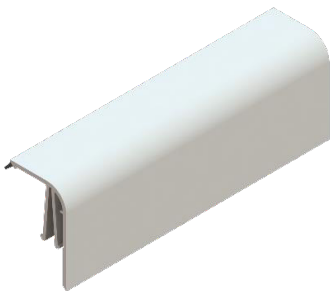
** LZSU0096 must always be installed prior to glazing. See section 3.07*



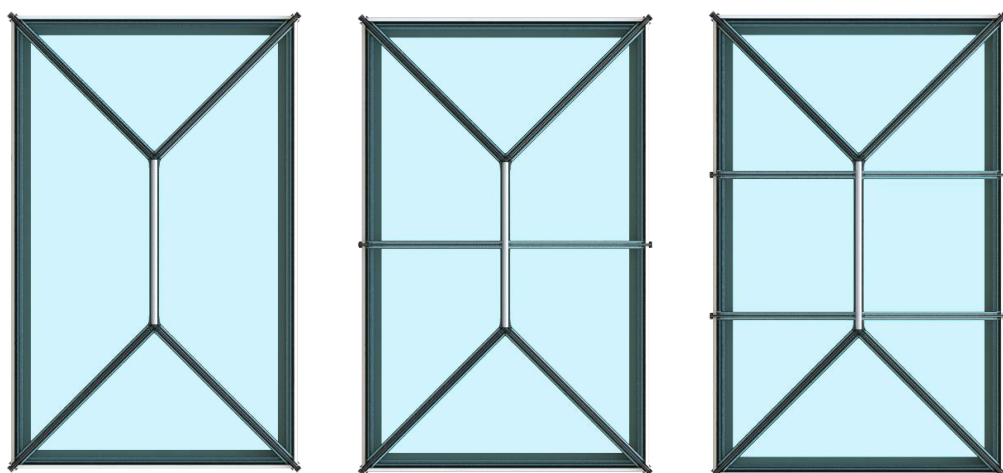
Related Components:



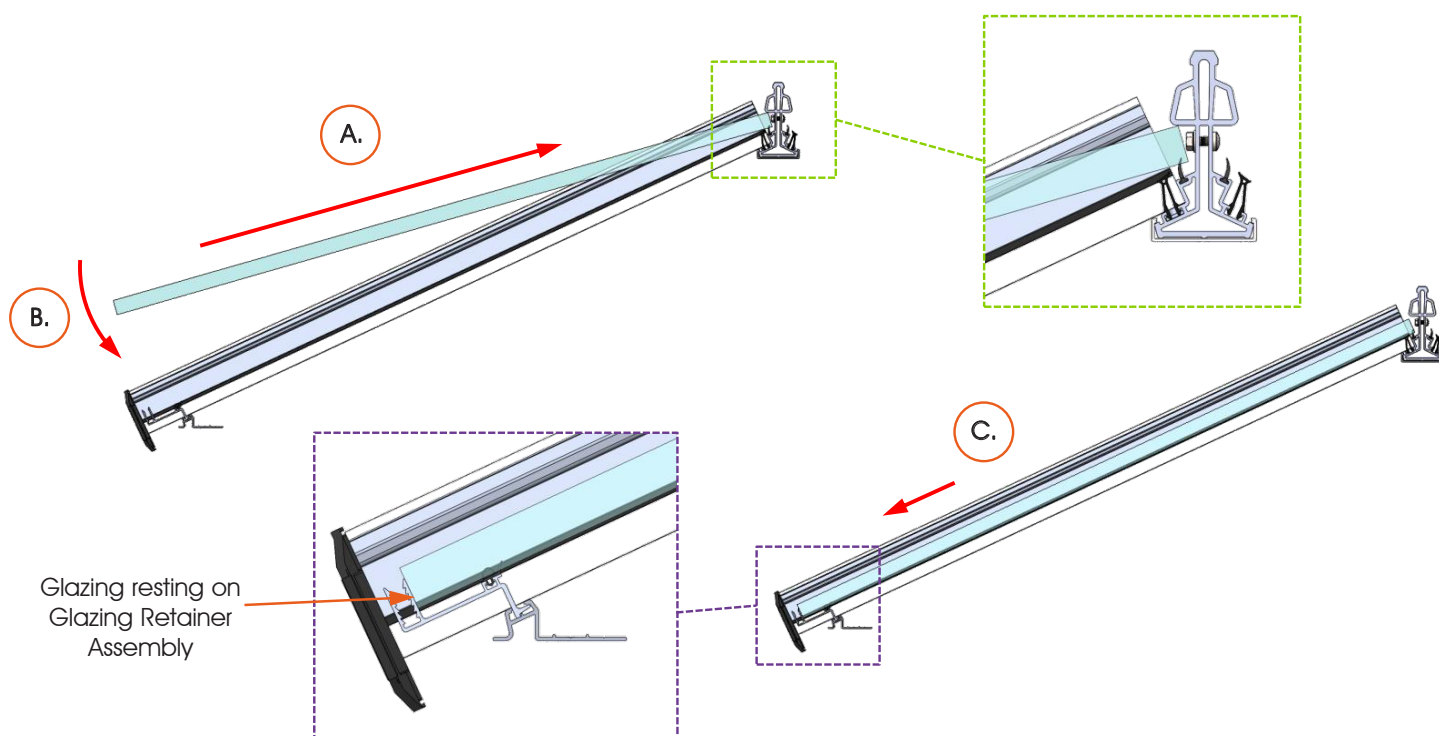
24mm Glazing



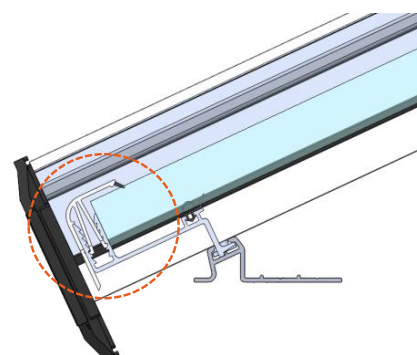
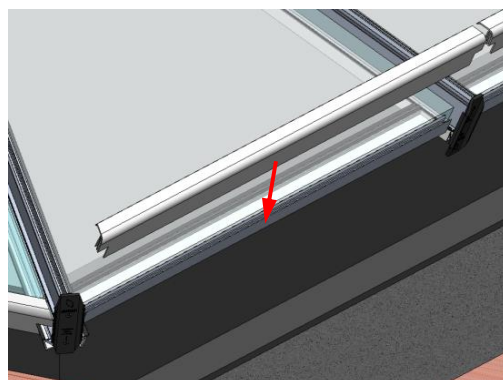
LZPE0028



- A. To install the glazing, push the top end of the glazing panel up to the Ridge.
- B. Lower the bottom end of the glazing panel to rest on the roof bars.
- C. Slide the glazing down until it is resting on the Glazing Retainer Assembly.

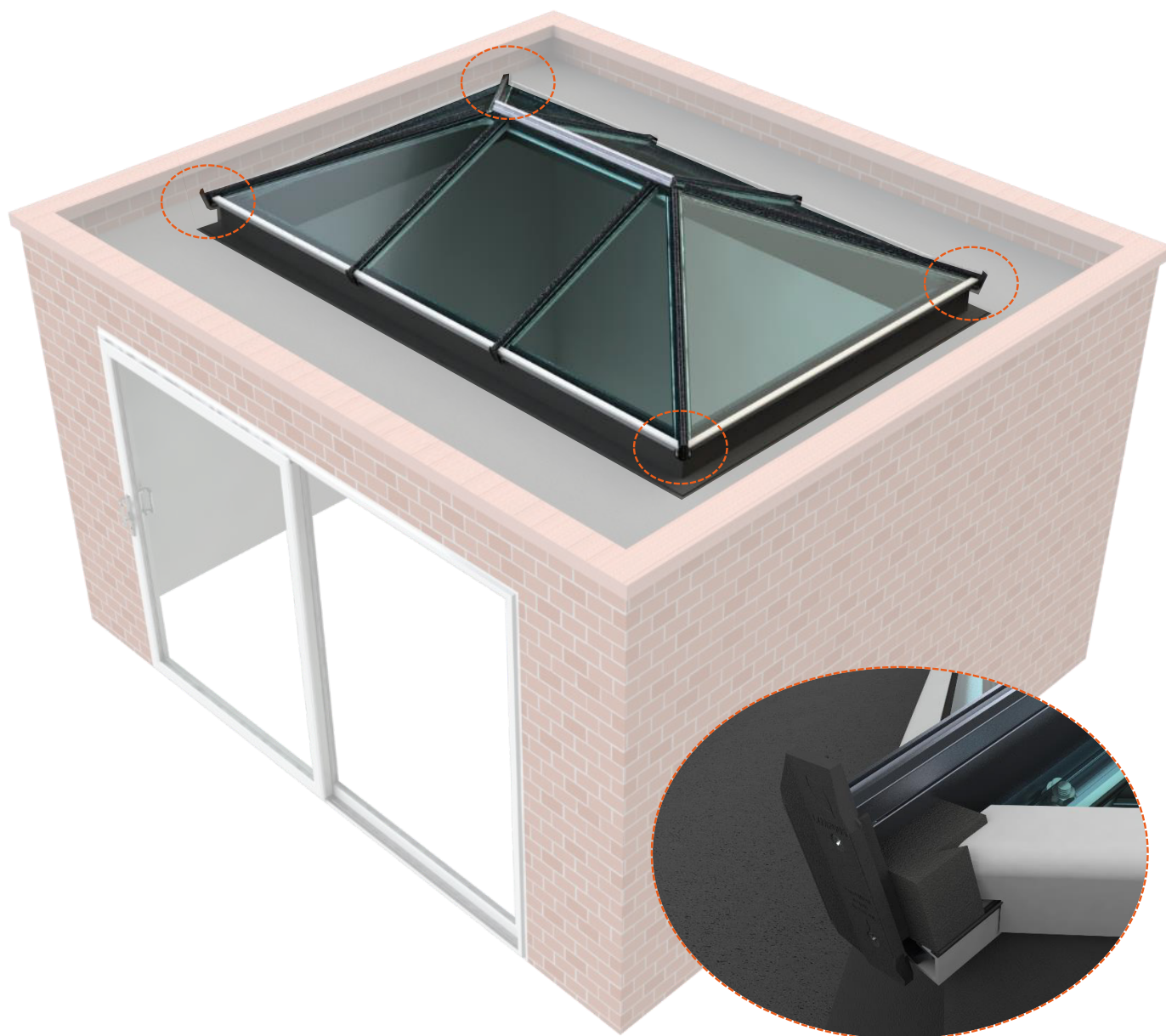


Once the glazing is in position, the Glazing Retainer Trims should be inserted into the Aluminium part of the Glazing Retainer Assembly.

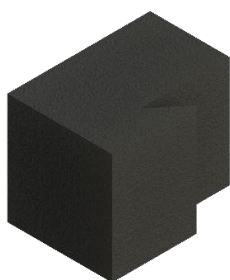


** Glazing Retainer Trims must be fitted before the Transom/Hip Bar Top Caps are installed*

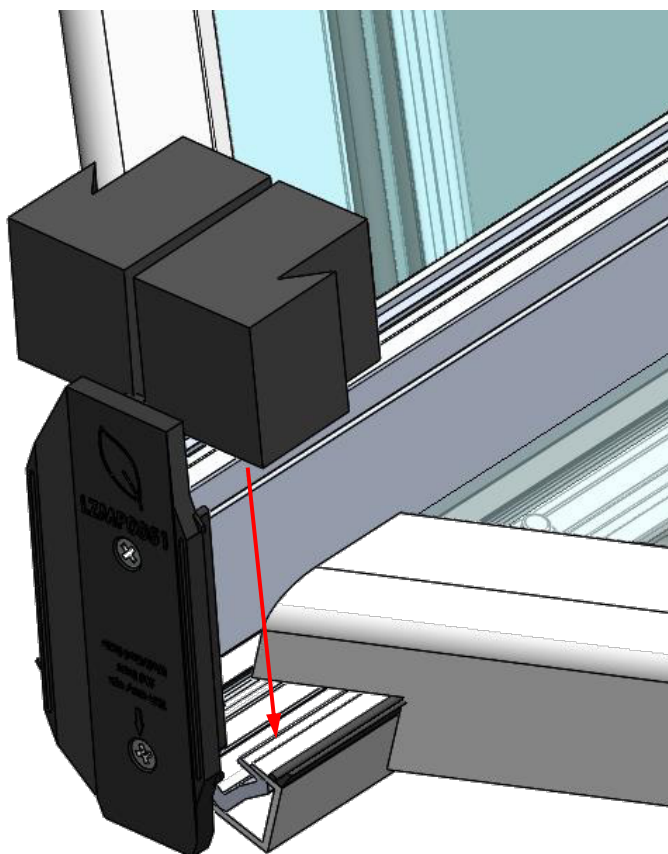
3.09 – Hip Bar Foam Assembly



Related Components



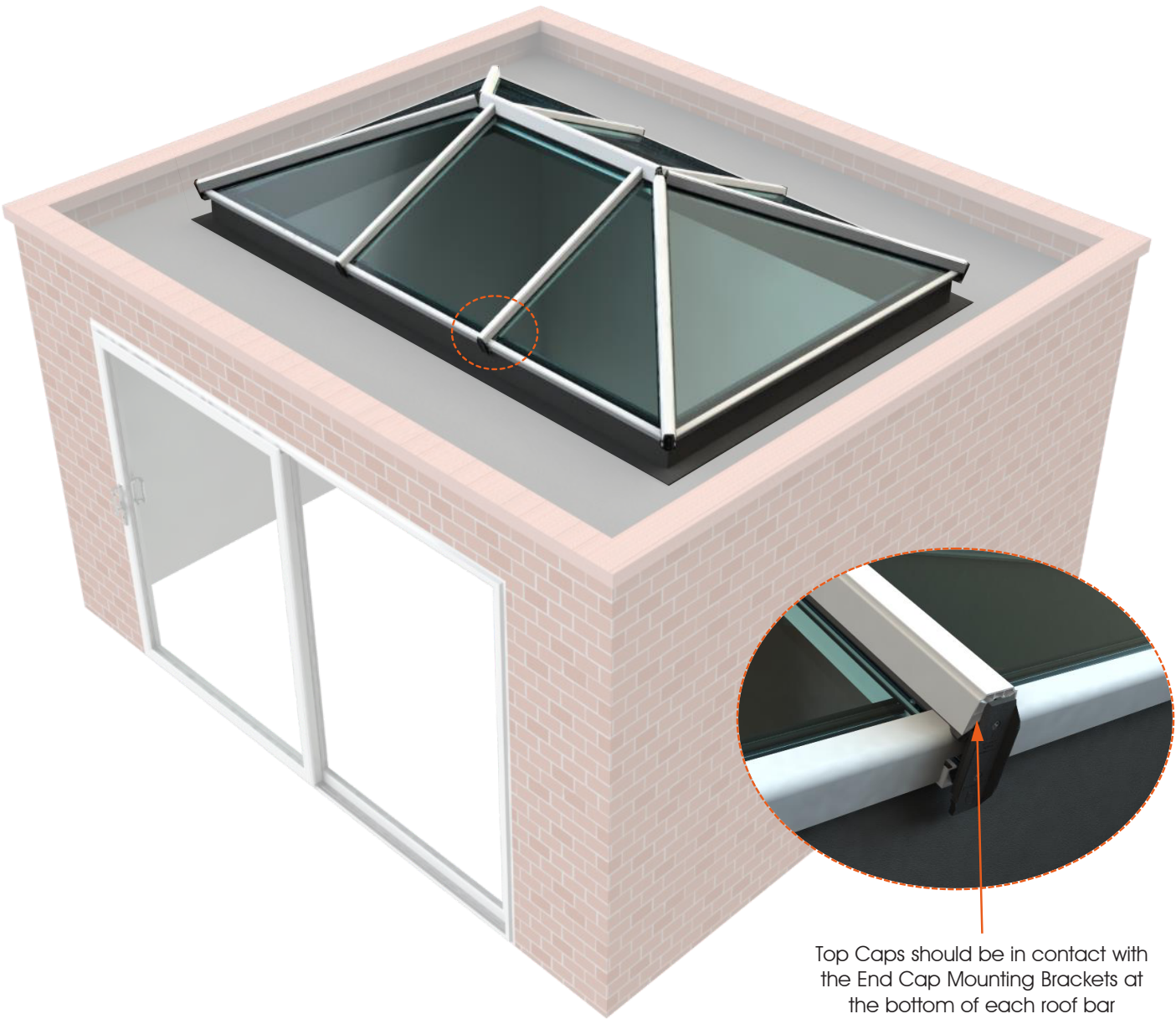
LZSU0099



Fit to all Hip Bars, ensuring that there are two Hip Bar Foam Bungs per bar

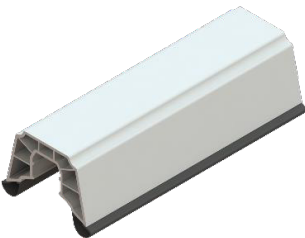


3.10 – Top Cap Assembly

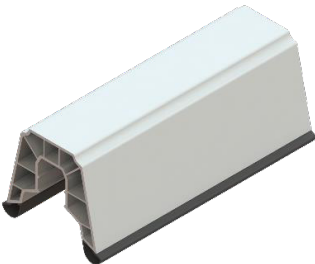


Top Caps should be in contact with the End Cap Mounting Brackets at the bottom of each roof bar

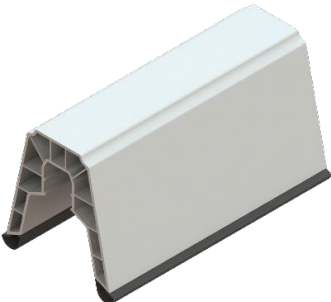
Related Components:



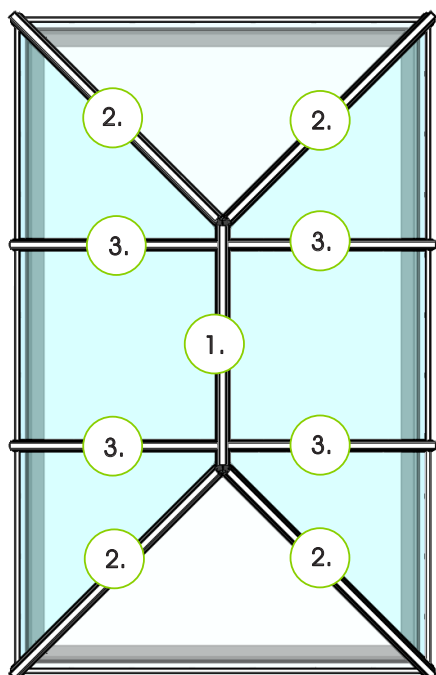
LZPE0041



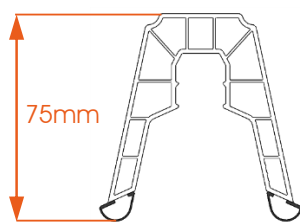
LZPE0042



LZPE0044

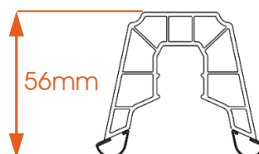


Fit in the correct order, and always fit Transom Bar Top Caps last.



LZPE0044

1.



LZPE0042

2.

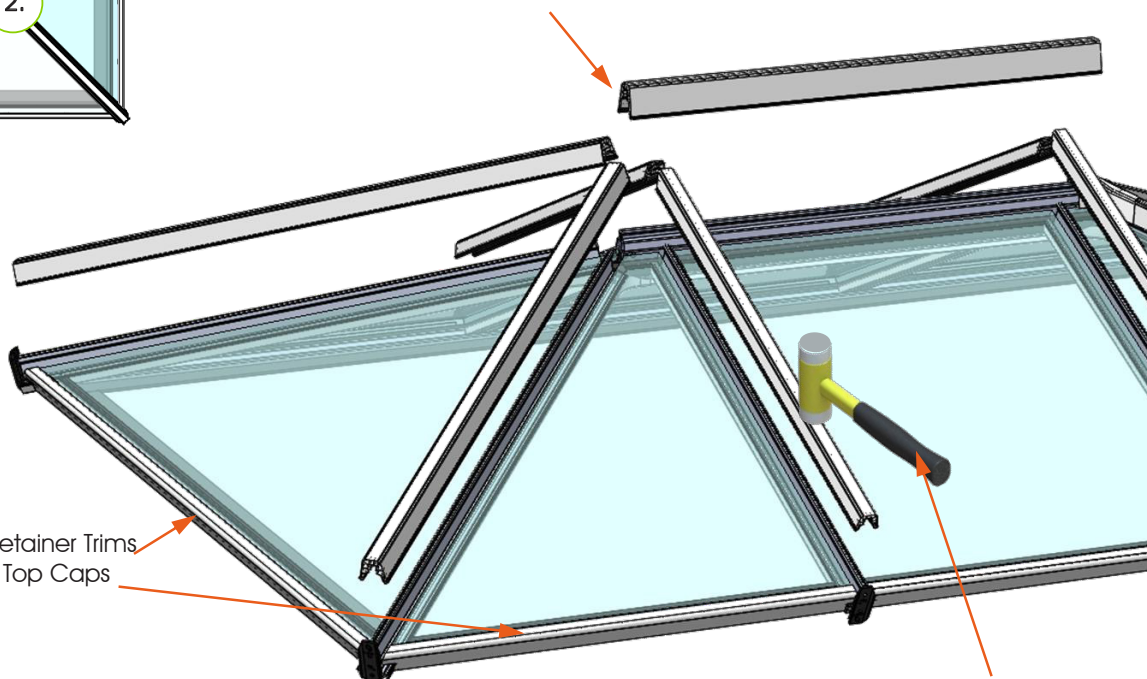


LZPE0041

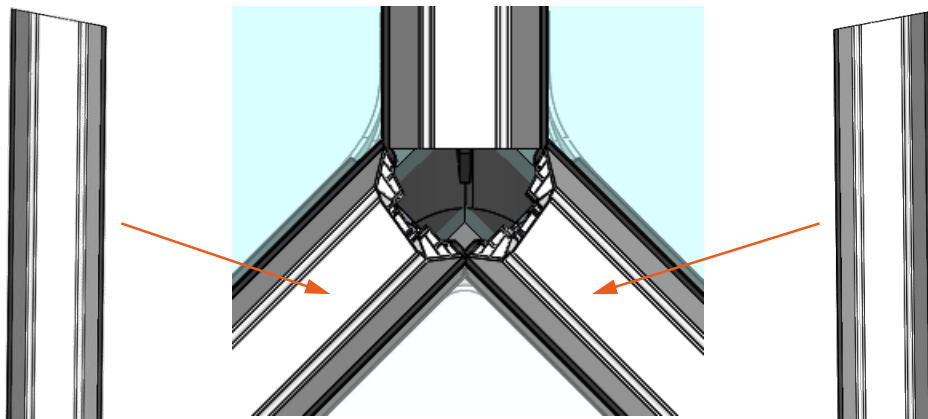
3.

Ensure LZPE0044 is flush with Ridge end. It should be cut the same length as the Ridge

Ensure Glazing Retainer Trims are fitted before Top Caps

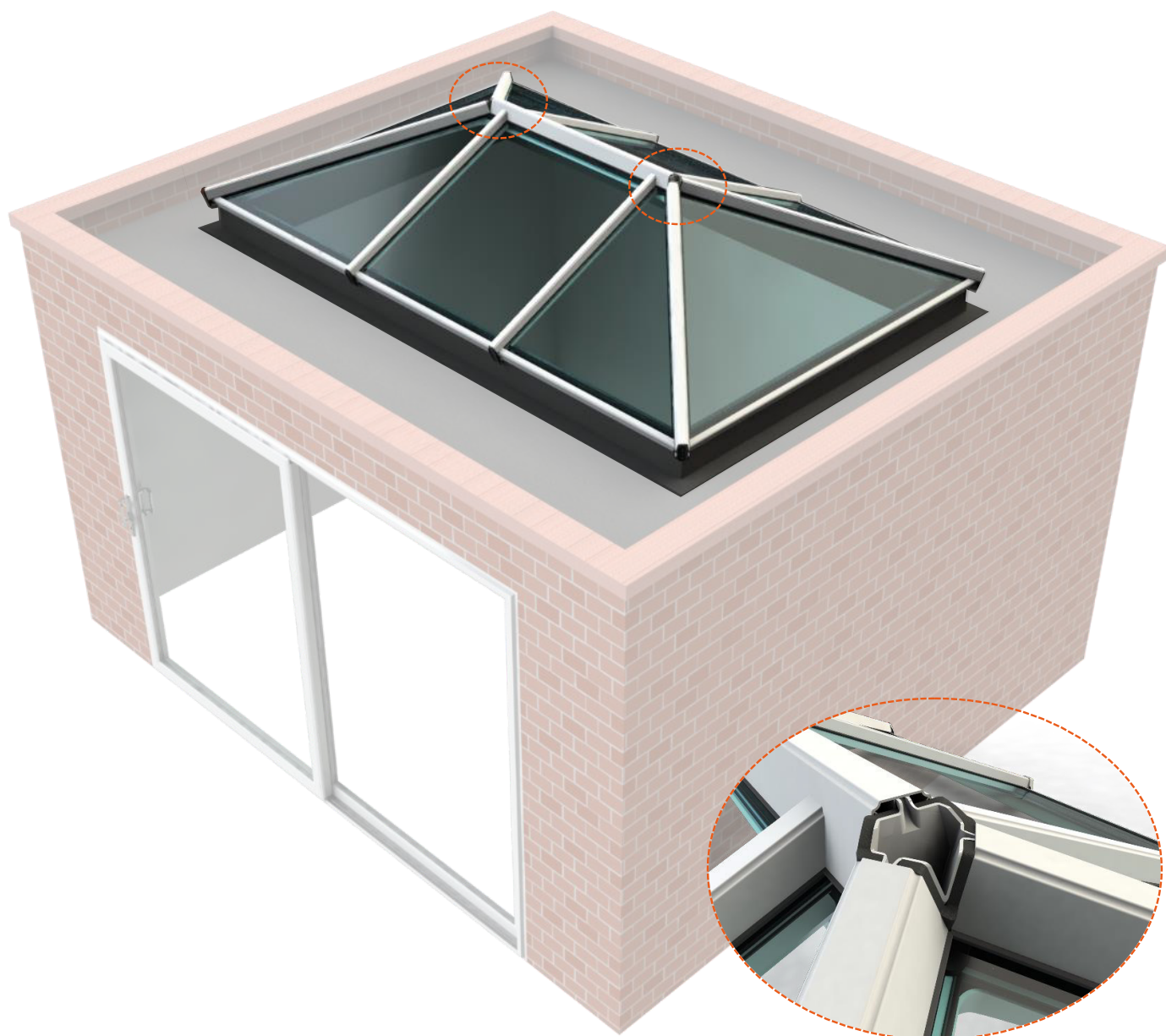


Using a glazing hammer, carefully secure the Top Caps. Work from one end of the bar to the other



See paperwork for Top Cap positions. Mitre cut to top of roof bar.

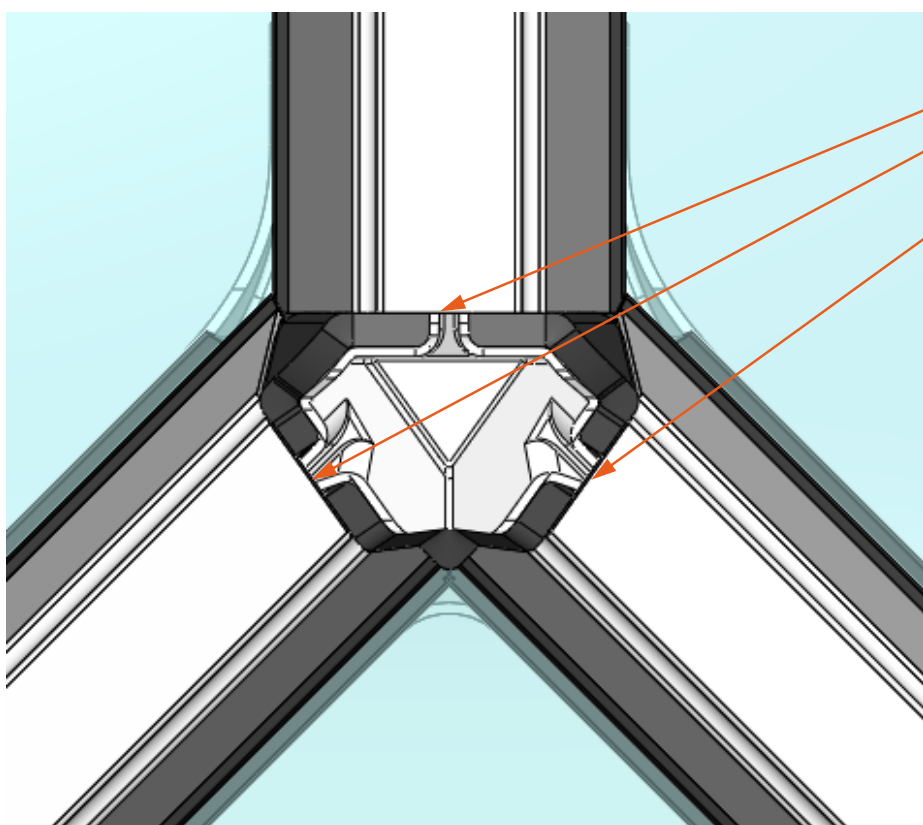
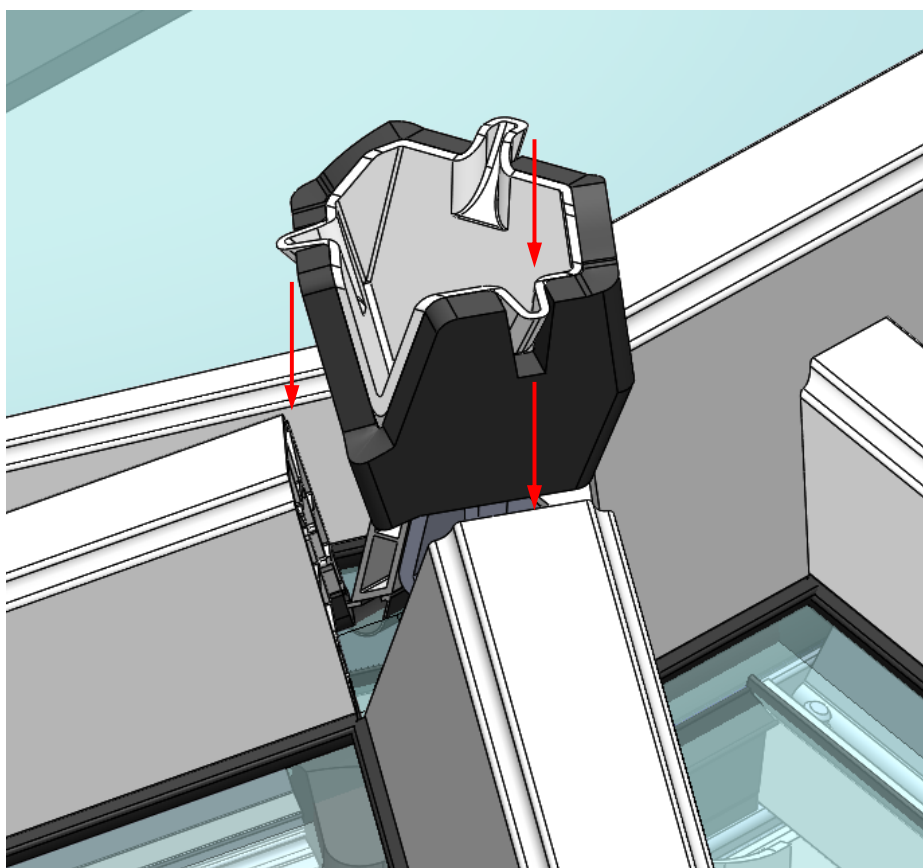
3.11 – Weather Dam Assembly



Related Components:



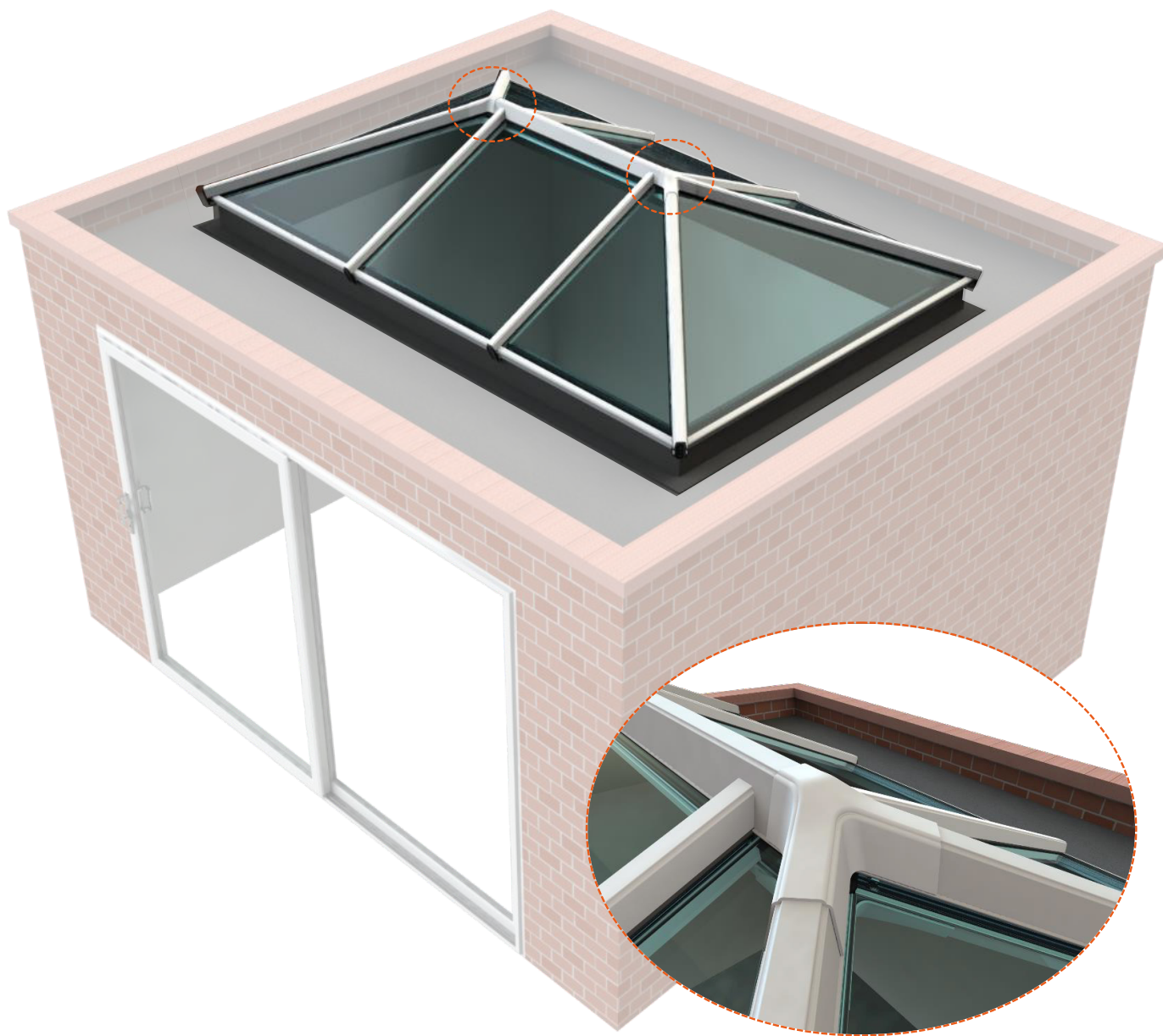
LZSU0097



Push down and clip into all three Top Caps

Repeat this process on the other end of Ridge. There are two Weather Dams per roof.

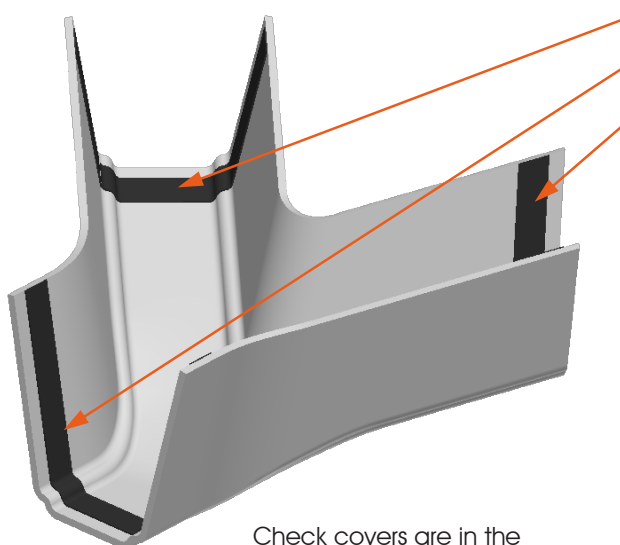
3.12 – External End Cover Assembly



Related Components:



LZMP0077

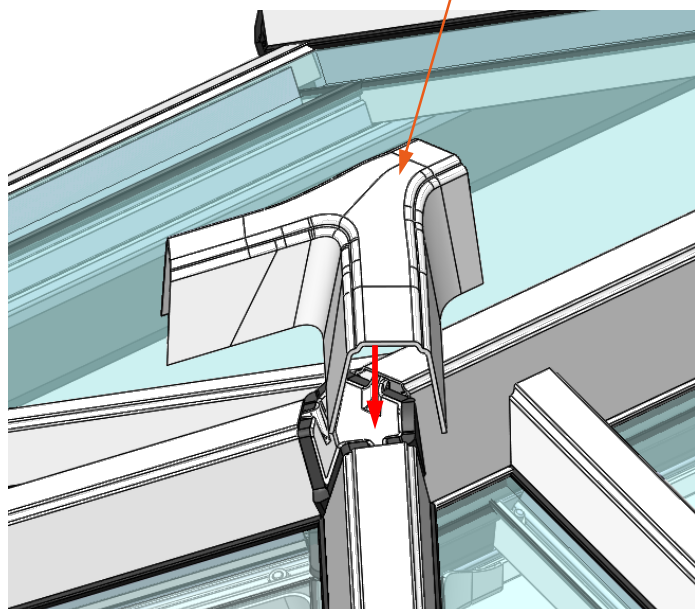


Peel off tape backing
before applying to roof*

** Ensure External End Covers are clean
and dry before applying to roof*

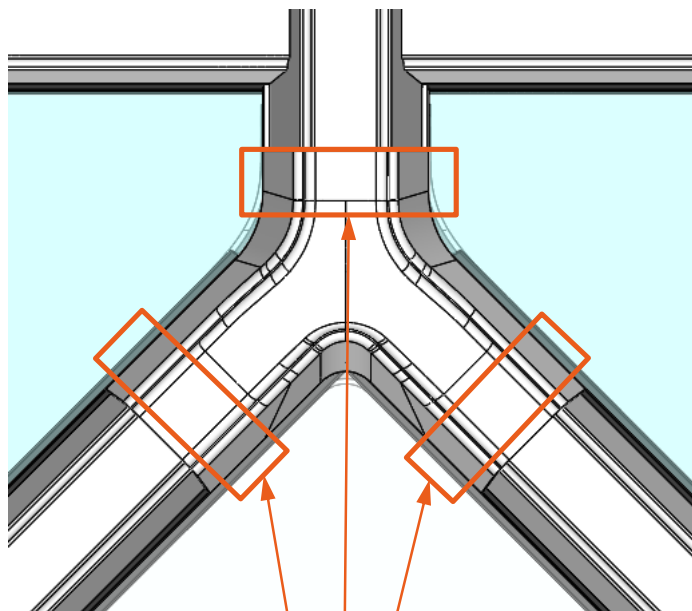
1.

Check covers are in the
correct orientation before
applying



2.

Firmly apply pressure in the areas shown below,
ensuring that all sides are properly adhered



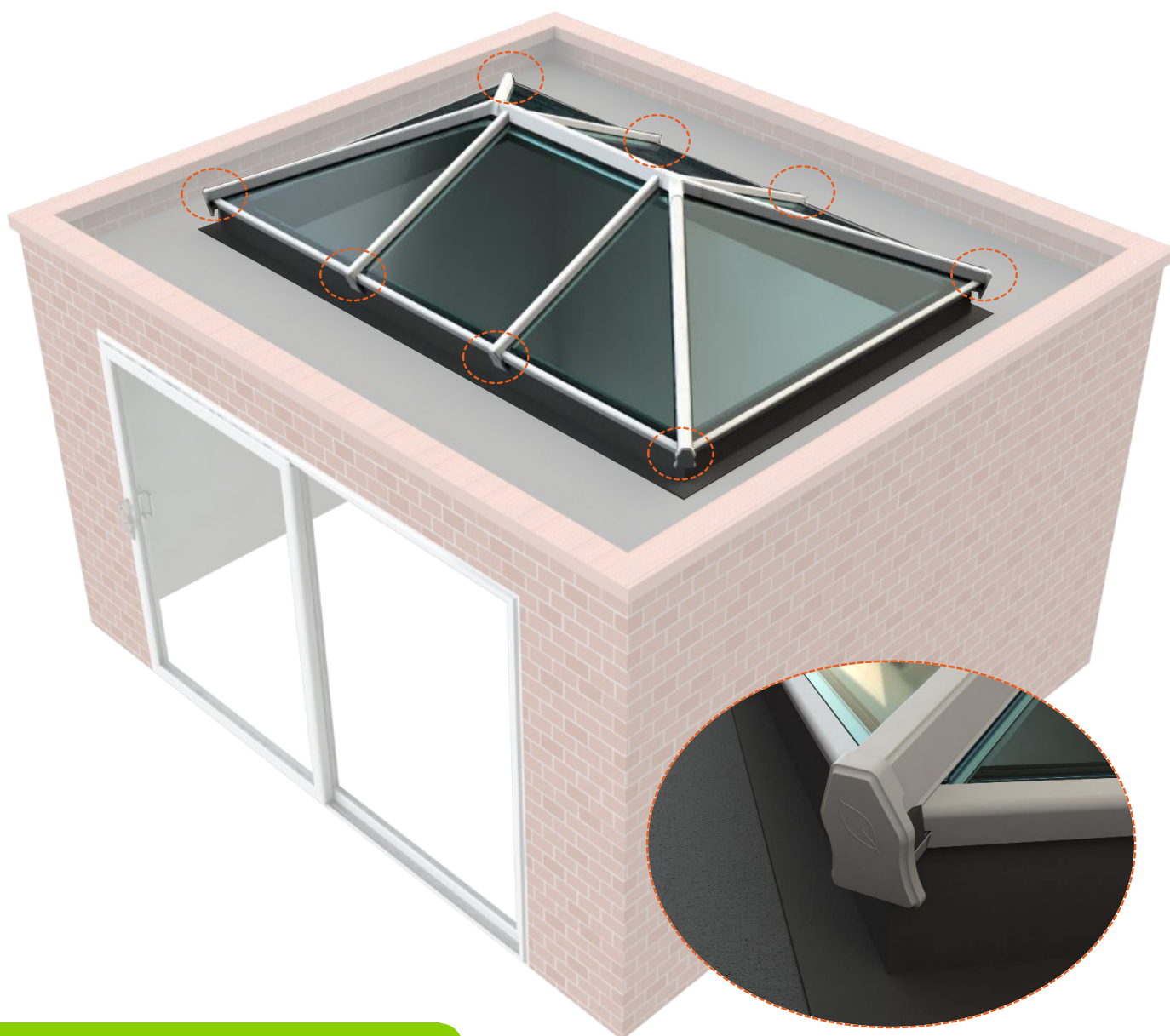
3.

Apply firm
pressure here

Repeat this process on the other side of Ridge. There are two External End Covers per roof.

3.13 - Roof Bar End Cap Assembly

The Roof Bar End Caps are installed to the bottom of each bar. Ensure the End Cap Mounting Brackets are present as the caps slide onto them.

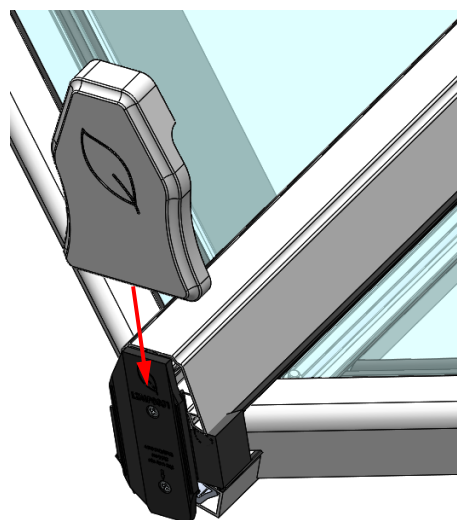
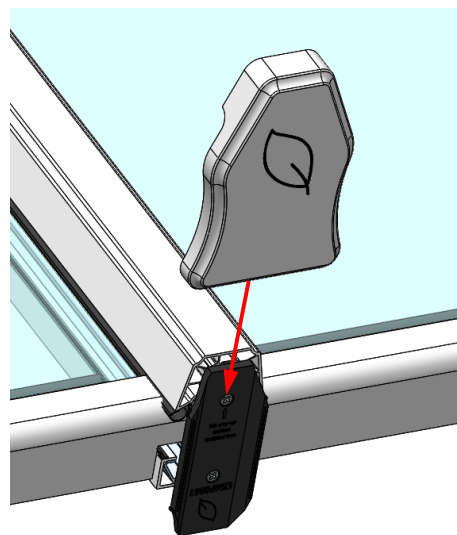
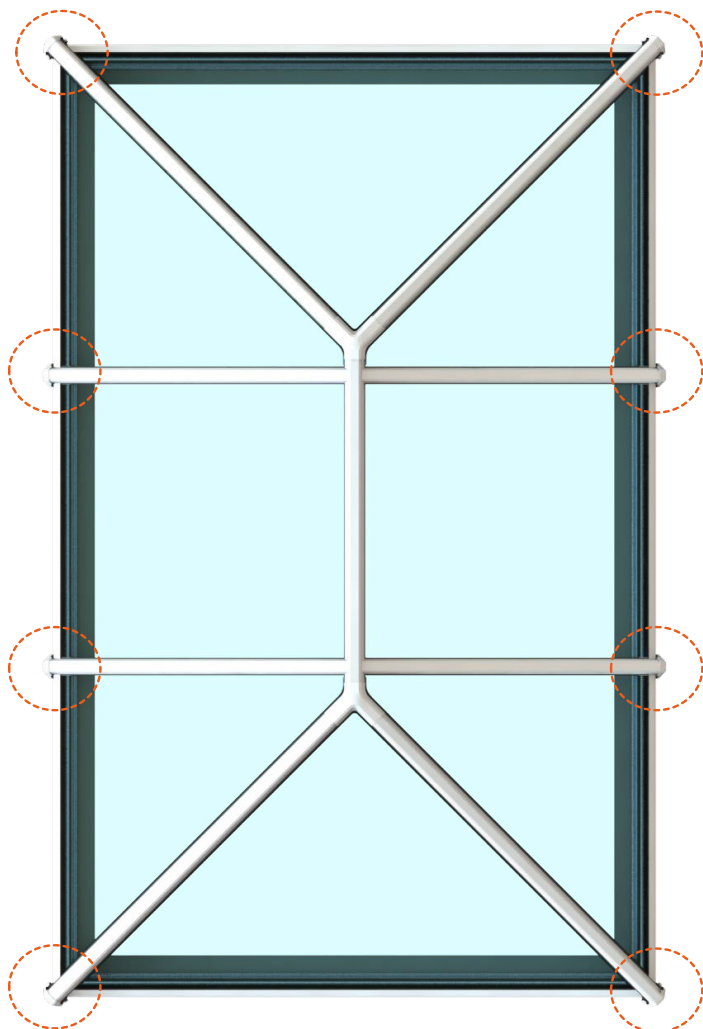


Related Components:



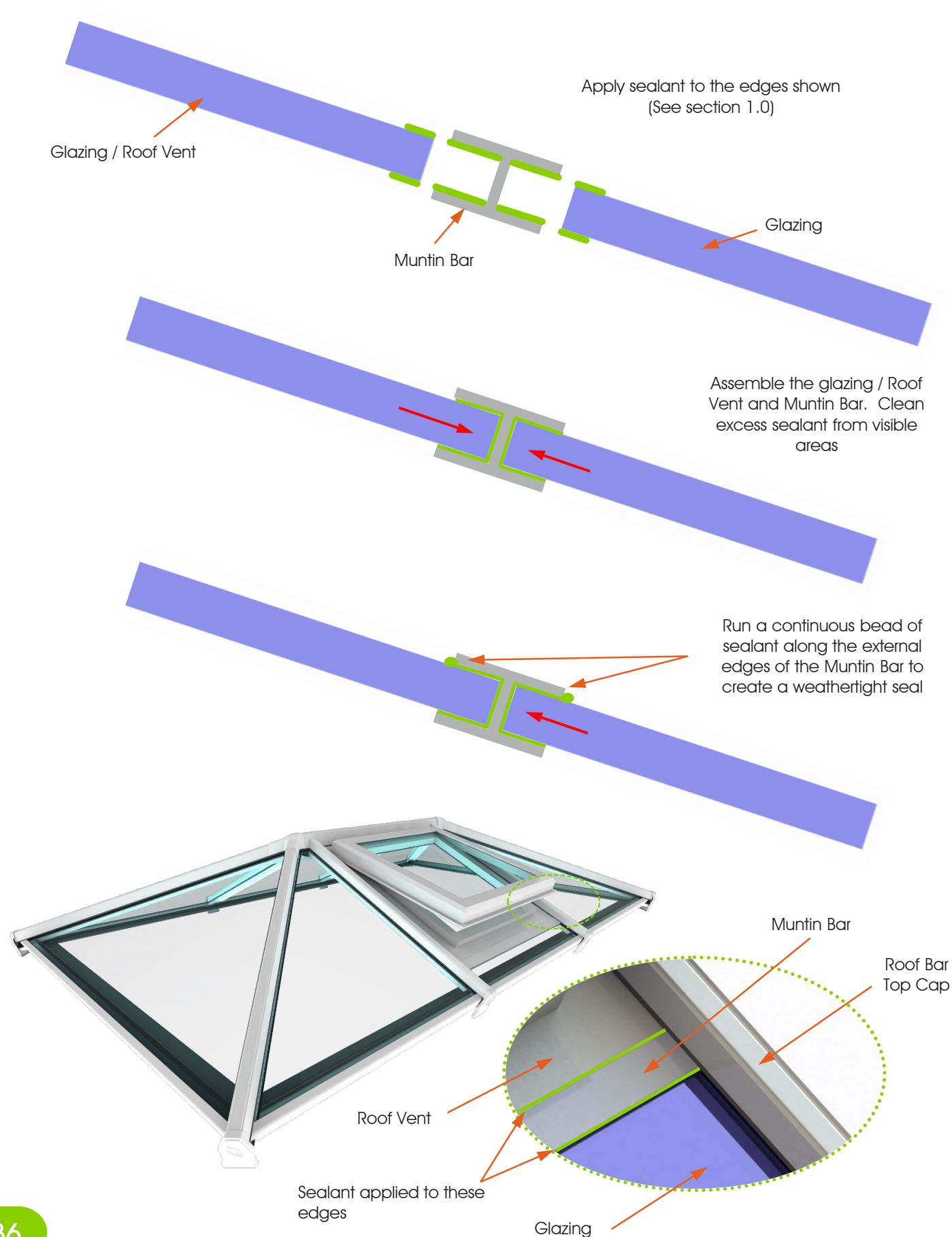
LZMP0052

All bars use the Roof Bar End Caps. The diagrams below show the correct positioning.



4.00 – Muntin Bar and Roof Vent Assembly

This section details the installation of Muntin Bars and Roof Vents. For further details see the manufacturer’s instructions supplied with your Roof Vent and Muntin Bar. To be installed during glazing..



Installation Supplies

Ensure a fully matching Lantern with Liniar's range of approved installation supplies. From the highest quality foam trims to coloured silicone sealants, you can be sure of a perfect match – all covered by the Liniar guarantee.

The range includes PVCu and glass cleaners, adhesives, window boards, fixings and accessories. For full details see www.liniar.co.uk/supplies.



Installer Support

Liniar provides installers with a variety of marketing tools and resources, helping you to grow your own business alongside ours.

PDF copies of brochures, fact sheets and other literature are available to download from the Liniar website at www.liniar.co.uk/downloads. You can also order full boxes by contacting the Liniar sales office.



After-sales support is available via our Liniar Roof Maintenance Guide.

Our video library can be found on the Liniar website, featuring a range of sales and installation videos for you to use and show to customers.

Follow Liniar on social media for the latest news and updates:

| | |
|-----------|-----------------|
| Twitter | @LiniarProfiles |
| LinkedIn | Liniar |
| Facebook | LiniarUK |
| Pinterest | LiniarUK |
| Google+ | LiniarUK |
| YouTube | LiniarUK |



Linlar

Flamstead House
Denby Hall Business Park
Denby
Derbyshire DE5 8JX

Tel: +44 (0)1332 883900
Fax: +44 (0)1332 883901
Email: sales@linlar.co.uk
www.linlar.co.uk

