

PREMIUM DRY VERGE SYSTEM

# VERGE

## MASTER

The new quick and easy  
master dry verge system

### Key Features:



Solid &  
Robust



Fast Fit Flex  
and Clip



UV Stable



All Weather  
Fixing



Conforms to  
BS8612 &  
BS5534



10 Year  
Guarantee



Leading Tile  
Cover Span



Accommodates  
Gutter Systems

**The Verge Master dry verge system has been designed to provide a quick and easy, great looking solution for finishing the verge of a roof that complies with BS-5534 and BS-8612.**

The system is available in dark grey, brown and black and manufactured from UV stable high quality polypropylene. Installation is quick and easy via the 'flex and clip' installation method and no special tools are required. Verge Wizard offers a sleek stylish finish that is highly robust and practically maintenance free.

Manufactured from polypropylene not only because it is robust and durable but because it also offers thermal stability and is UV resistant.

## Benefits

- ✓ Fast fix flex and clip installation
- ✓ Universal - can be used on left and right verges
- ✓ Unique modern design
- ✓ New build and refurbishment
- ✓ Quick and easy fit starter unit
- ✓ Meets BS-5534 and BS-8612 requirements
- ✓ Manufactured under BS EN ISO 9001 QMS and BS EN ISO 14001
- ✓ Mechanically fixed
- ✓ All weather fixing

## Key Features:



Solid & Robust



Accommodates Gutter Systems



Fast Fit Flex and Clip Install



All Weather Fixing



10 Year Guarantee



UV Stable

## Colours:

Available in Dark Grey, Brown and Black



Left Hand Verge

Right Hand Verge



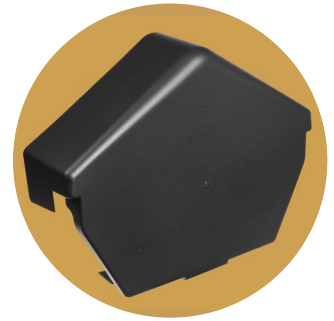




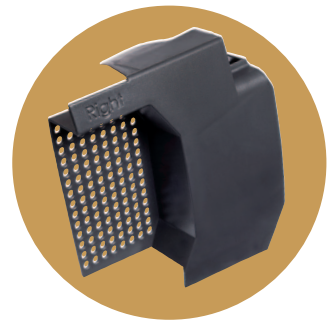
## Product Range:



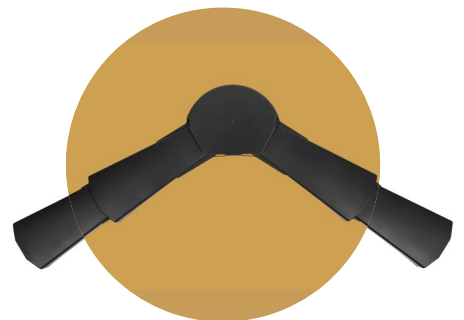
Round Ridgecap



Angled Ridgecap



Starter Unit



Universal Layup



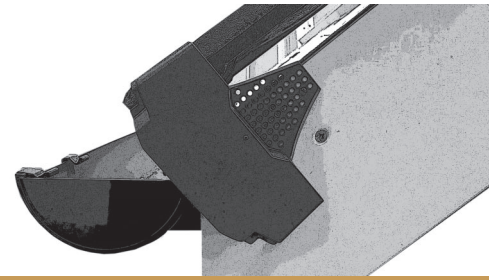
# Install Instructions

## 4 simple steps for a quick and easy installation:

For newbuild - ensure tiling battens are extended 35-40mm beyond the gable wall or bargeboard. Fix a batten end clip to the end of every batten.

For refurbishment - it is recommended that all existing mortar is removed. Run a suitable batten from eaves to ridge, below the undercloak on the gable wall or directly to the bargeboard.

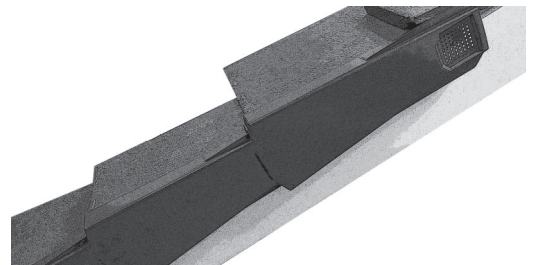
1. Fix the starter plate to the gable wall or bargeboard, ensuring the location guide is on top of the tile.
2. Fix the first Verge Wizard in place by clipping over the starter plate and ensuring the top of the verge unit is under the tile above. Fix into position through the batten end clip or running batten depending on your project.
3. For each successive Verge Wizard simply flex and clip over the verge below and slide up to the tile toe. Fix into position through the batten end clip or running batten depending on your project. Continue this process until you reach the ridge.
4. Flex and clip the ridge cap over the ends of both units, central to the ridge tile, and securely screw to the ridge batten



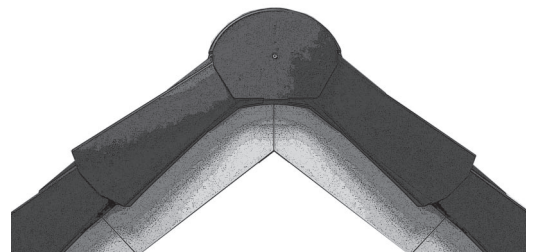
Step 1



Step 2



Step 3



Step 4

## Contact Details

### Dry Verge Systems

Pioneer House, Mariner  
Lichfield Road Industrial Estate  
Tamworth, Staffordshire, B79 7TF

**0345 123 4567**

hello@dryvergesystems.co.uk  
www.dryvergesystems.co.uk

PREMIUM DRY VERGE SYSTEM  
**VERGE**  
MASTER