

UNIVERSAL DRY VERGE SYSTEM

# VERGE

WIZARD

Scan me for  
more  
information

The new quick and  
easy universal dry  
verge system



## KEY FEATURES:

Fast fit flex and  
clip installation



UV stable



Easy find  
location



Solid and  
robust



All weather  
fixing



Mechanically  
fixed



BS-5534 and  
BS-8612 compliant



Accommodates  
gutter systems



The Verge Wizard dry fix verge system has been designed to provide a quick and easy, great looking solution for finishing the verge of a roof that meets the requirements of BS-5534 and BS-8612.

The system is available in dark grey, brown and black and manufactured from UV stable high quality polypropylene. Installation is quick and easy via the 'flex and clip' installation method and no special tools are required. Verge Wizard offers a sleek stylish finish that is highly robust and practically maintenance free.

Manufactured from polypropylene not only because it is robust and durable but because it also offers thermal stability and is UV resistant.

## BENEFITS:

- Fast fit flex and clip installation
- Universal - can be used on left and right verges
- Unique modern design
- New build and refurbishment
- Quick and easy fit starter unit
- Meets BS-5534 and BS-8612 requirements
- Mechanically fixed
- All weather fixing
- Manufactured under BS EN ISO 9001 QMS and BS EN ISO 14001

## KEY FEATURES:



Fast fit flex and clip installation



UV stable



Easy find location



Solid and robust



All weather fixing



Mechanically fixed



BS-5534 and BS-8612 compliant



Accommodates gutter systems

## COLOURS:

Available in Dark Grey, Brown and Black







## PRODUCT RANGE:



Verge unit



Round ridge cap



Angled ridge cap



Starter unit



Batten end clip

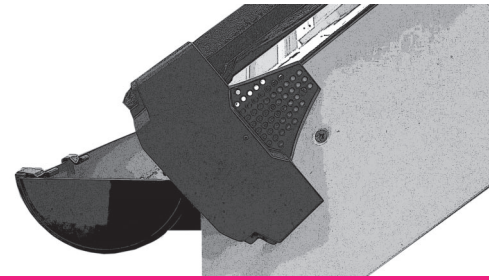
# Install Instructions

## 4 simple steps for a quick and easy installation:

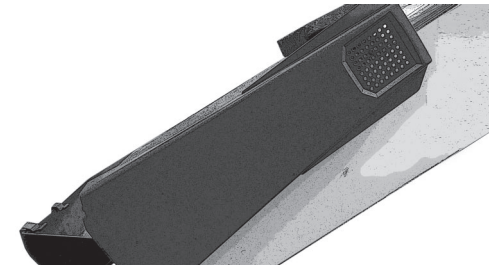
For newbuild - ensure tiling battens are extended 35-40mm beyond the gable wall or bargeboard. Fix a batten end clip to the end of every batten.

For refurbishment - it is recommended that all existing mortar is removed. Run a suitable batten from eaves to ridge, below the undercloak on the gable wall or directly to the bargeboard.

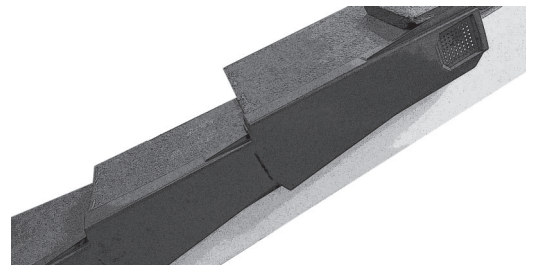
1. Fix the starter plate to the gable wall or bargeboard, ensuring the location guide is on top of the tile.
2. Fix the first Verge Wizard in place by clipping over the starter plate and ensuring the top of the verge unit is under the tile above. Fix into position through the batten end clip or running batten depending on your project.
3. For each successive Verge Wizard simply flex and clip over the verge below and slide up to the tile toe. Fix into position through the batten end clip or running batten depending on your project. Continue this process until you reach the ridge.
4. Flex and clip the ridge cap over the ends of both units, central to the ridge tile, and securely screw to the ridge batten



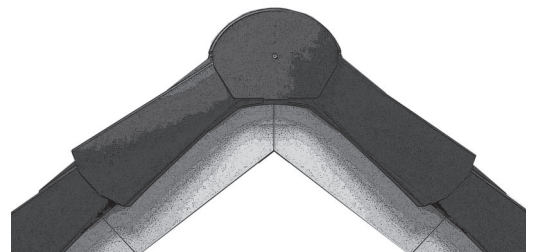
Step 1



Step 2



Step 3



Step 4

## Contact Details

### Dry Verge Systems

Pioneer House, Mariner  
Lichfield Road Industrial Estate  
Tamworth, Staffordshire, B79 7TF

**0345 123 4567**

[hello@dryvergesystems.co.uk](mailto:hello@dryvergesystems.co.uk)

[www.dryvergesystems.co.uk](http://www.dryvergesystems.co.uk)

UNIVERSAL DRY VERGE SYSTEM  
**VERGE**  
WIZARD

